



annual 2016-2017 report

front cover inside: this page intentionally left blank

annual report 2016 - 2017

Centre for Community Initiative
Annual Report 2016 – 2017
Front cover artwork created by Elizabeth Chawngzamawi,
student of TMI. She is with cerebral palsy.
© 2017

Contact:

Administrative Office:

Nehru Marg, Central Lamka,
Churachandpur 795128, Manipur

Project Office:

Malsawm Ability Resource Centre, Pearsonmun,
Churachandpur 795006, Manipur

Registered Office:

Zuihnuam Road, College Veng, New Lamka,
Churachandpur 795128, Manipur

W: www.communityinitiative.in

E: info@communityinitiative.in

P: 03874-233108

Registration Details:

- ♥ Regn. No. 6 of 2002 under the Manipur Societies Registration Act, 1989
- ♥ Regn. No. 24/CCP/2010 under the Directorate of Social Welfare Government of Manipur
- ♥ Regn. No. 76 of 2010 under Persons with Disabilities Act, 1995;
- ♥ Regn. No. 071216261488009/MR/CP/AUTISM/MD with National Trust under Ministry of Social Justice & Empowerment, Government of India
- ♥ Registration No. OC-579/80G/CIT/JRT/2011-12/6526-36 under Section 80G of the Income Tax Act, 1961 for Tax Exemption
- ♥ Registration No. OC-1141/12A/CIT/JRT/2011-12/1291-93U/S 12A of the Income Tax Act, 1961
- ♥ Registration No. 194160092 under Foreign Contribution (Regulation) Act, under Ministry of Home Affairs, Govt of India
- ♥ PAN Card No. AAAAC7916L

Milestone

<p>Restructuring of CCI to engage with disability in areas of Advocacy, Awareness Campaigns and Mobilizing Parents of Disability</p>	<ul style="list-style-type: none"> - Strengthening of CCI to carry out activities such as Advocacy, Awareness Campaigns - Mobilizing Parents and Conducting Monthly Parents' Meeting 	<ul style="list-style-type: none"> - Publication of Right to Information (RTI) guide for Persons with Disabilities in Local Language - Organised Disability Assessment Camps, Awareness campaign is gaining ground. 	<ul style="list-style-type: none"> - Advocacy, Awareness and Parents counselling and meeting is part of the regular activities. - Response from most influential institution in the society – the church taking more initiatives on disability through leaders orientation. - Campaign for establishing school for special needs children started. 	<ul style="list-style-type: none"> - The Malsawm Initiative (A School for Children with Special Needs)/TMI came into being. His Excellency Gurbachan Jagat, Governor of Manipur inaugurated - The School started off with 15 Students with all categories of Disability and 8 in the wait-list with 4 Staffs - A Van was donated by Deputy Commissioner, Churachandpur. - Voice and Vision India, Mumbai gave opportunity to join Teacher Training course at Mumbai, Ahmadabad and Chennai.
2007	2008	2009	2010	2011
2012		2013	2014	
<ul style="list-style-type: none"> - 12 students are enrolled - Appropriate service and support are provided to student at the capacity of the institution. - Formation of Parents Support Group (PSG) - Formation of Churachandpur District Disabled Union (CDDU) - Three staffs sent for a course on Diploma in Special Education at Helen Keller Institute, Mumbai - Technical Support from Voice and Vision India, Mumbai - Network Support from Salwan Media, New Delhi - District Administration awarded Excellency in Social Sector during Indian Republic Day Celebration. 		<ul style="list-style-type: none"> - Acquire land for 'Ability Village (An Empowerment Centre for Persons with Disabilities). UN Resident Coordinator & UNDP Resident Representative Ms Lise Grande unveiled foundation stone for Ability Village. - One staffs sent for a course on Diploma in Special Education at Helen Keller Institute, Mumbai 	<ul style="list-style-type: none"> - 4 United Nations Volunteer with different professions (School Administrator, Speech Therapist, Physiotherapist, Special Educator) joined CCI - The number of students enrolled was increased to 25 - TMI was shifted to its new campus at Malsawm Ability Resource Centre (MARC), Pearsonmun - Socio-Economic Survey of Disabilities in Churachandpur with support from CBM started - Constitution of District Medical Boards - Open Door Service and Home Based Care started. - Eimi Achiever Award in Community Services received, an award initiated by District Administration 	

- The number of students enrolled is 25
- Village Based Rehabilitation / CBR started with support from CBM
- District Medical Board constituted with the CCI initiative
- Advocacy at Institutions and Villages strengthen
- Open Door Service served more than 30 PwDs

- The number of students enrolled increased to 30
- Ministry of Social Justice & Empowerment, Govt of India approved to support The Malsawm Initiative.
- Early Intervention Unit started.
- Accessible Toilet constructed
- Joined Regional Action on Inclusive Education in North East (RAISE NE) project.
- Intervened in reconstruction (with support from CBM) of P Molding this was damaged due to earthquake.
- Ginmalsawm Tonsing Award is constituted to encourage PwDs students in Secondary School.

2015

2016



2017

- Increased intake of student at TMI, Early Intervention, Home Based Care
- Initiated for Disability inclusive Disaster Risk Reduction (DiDRR)
- Revamping organisation for better management and functioning with guidance from CPA Services Ltd.
- Reached out to more civil society for social inclusion
- Handlooms are installed for Vocational Unit at MARC
- Partner NGO in a livelihood project – NERCORMP
- Continuing support reconstruction for earthquake damaged at P Molding village.





Chairman's Message

Grateful that another year has gone by with CCI moving forward and upward. CCI is developing and improving in its management and functioning, and better equipped for legal compliances. CBM is kind enough in moulding us to be credible, accountable and transparent organisation by sending CPA Services Ltd for accompaniment programmes.

While developing the functioning of the organisation, we could increase services to persons with disabilities and could even extend to the most marginalised section of the society by introducing livelihood project. Reaching the unreached to change their socio-economic life while preserving their environment is a noble job. Respect to staffs who walked miles and miles on foot to bring lights and hope to these villagers. Bringing better life to the rural poor is a blessing since there is no greater service than serving fellow human beings.

It is an immense joy to see the continuing support of the community in bringing forward/ spreading the message of social inclusion. It is our common responsibility to make an inclusive society where all have opportunities according to their abilities. I am happy that we could be part of implementing UN's Sustainable Development Goals, however small, in our own way.

Another successful year added due to the dedication of the management staffs and relentless support from partners, district administrations, stakeholders, parents and community. May God bless you.



N Ginsianlal





Executive Director's Message



As the name itself reflect, Centre for Community Initiative (CCI) is a community own organisation and an organisation of action. All achievements that we can recount today are due to the concerted effort of the community, managing committee members, staffs, parents, supporters and all stakeholder. With our vision in mind, we have been climbing the ladder towards maturity.

During the past year, we have added more partners and more programmes towards the cause we work for. Having worked with Perkins Voice and Vision India, UNDP, National Foundation for India, CBM, Sunshine Snapdeal, Ministry of Social Justice & Empowerment, Govt of India, we could work with North Eastern Region Community Resource Management Project (NERCORMP) which is supported by North Eastern Council (NEC) and Ministry of DONER, Govt of India. This project is a livelihood and rural development project aimed to transform the lives of the poor and marginalized tribal families in North East India.

Hoping that no calamity comes but to be prepared, we have developed a Disaster Risk Reduction unit which is Disability Inclusive (DiDRR). The earthquake that shook the state of Manipur in early 2016 was an eye opener.

By adding more programmes, we are able to reach out to more persons with disabilities and marginalised section of the society this year. The number of intake at The Malsawm Initiative is increased, Early Intervention Unit has more students and we have reached out to more Home Based Care beneficiaries. Our social inclusion campaign has gained momentum and is slowly shaping the society for more inclusion. Livelihood projects cover more than 26 village, we could provide support and help to the earthquake damage victims with help from our partners.

The increasing number of volunteers to support our work is formalised and we could accommodate more interns from various universities/ institutes across the country.

As an organic organisation, we are looking forward and praying that greater days are coming.

Pauzagin Tonsing



what we do

Centre for Community Initiative (CCI) is a non-governmental, non-political and not-for-profit organization started on March 7, 2002 by like-minded individuals dealing with various issues to provide a better society through community initiative and participation towards their welfare. CCI was restructured in 2007 when the Secretary, who is a father of a blind child, felt the urgent need to form a parents' group that would meet regularly to share their problems, to encourage one another in challenging times and to work towards creating a more accepting society.

Centre for Community Initiative is devoted to persons with disabilities advocating, facilitating and empowering parents, siblings and persons with disabilities through practical support, assessment and counseling. It involves in mapping positive and supportive environment for persons with disabilities; encourages inclusive education and advocates for their rights and dignity. It shares, listens, commits and works towards building a responsive society in which differently and potentially abled people grow in self-esteem and enjoy full participation in the community.

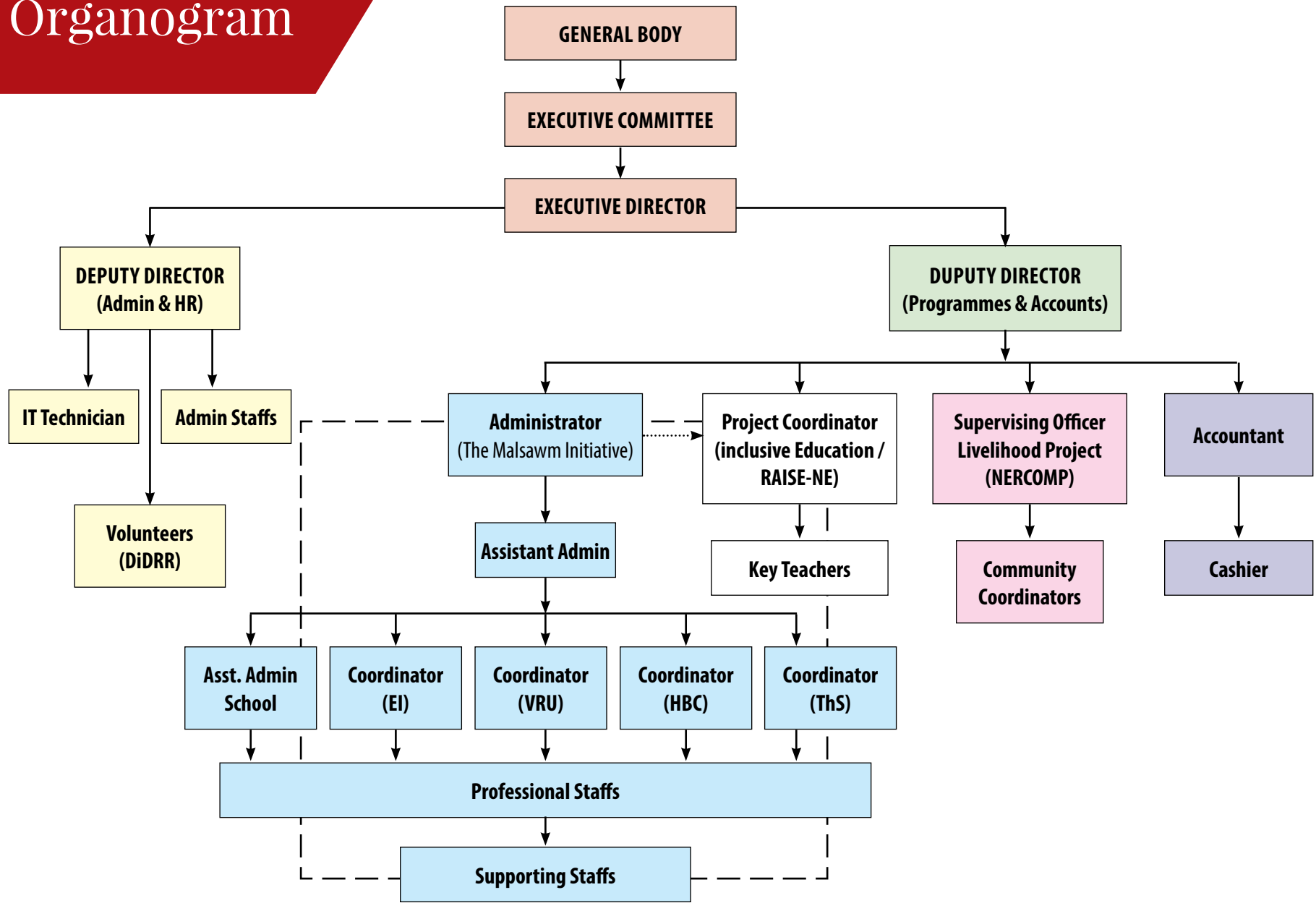
our vision

We believe that each individuals, communities, institutions and government contribute in their own way to make the world a better place to live in.

our mission

To build and strengthen society in health care, education and socio- economic development through community initiatives and participation with special focus to persons with disabilities.

Organogram



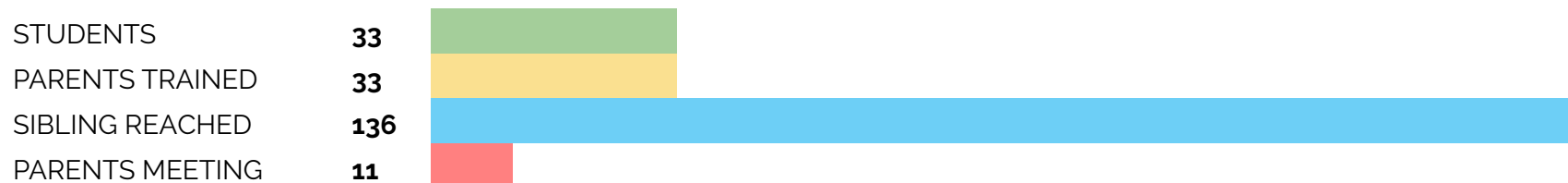
THE MALSAWM INITIATIVE

A School for Children with Special Needs

The Malsawm Initiative brings together children with crossed disabilities under one roof. The primary focus is on academic, behavior modification, cognitive, language, social and vocational skills with therapeutic services including physiotherapy, speech therapy and mobility training. Service is provided to the children based on the Individualized Education Program (IEP) developed for each one of them. For a more active involvement of parents in the school activities and education program, a Parents' Support



Group was also formed. Due to the dedication of staff and parents, three students have graduated from TMI and have now enrolled into a regular school.



Assessment/ Case Study	Home Visit	Parents Counselling/ Orientation	Classroom	Individualised Education Plan
Assessment done to find out how best to provide service	To better understand their environment and needs	Counselling given to help parents understand their child better	Students are grouped according to their ability	IEP for each and every student

Teaching learning Materials	Monthly Evaluation	Monthly Parents- Teacher Meet	Parents Support Group	Reaching out to siblings
Customised TLMs for students based on IEP	Evaluation done based on IEP and planning for the next period	A platform for teachers and parents to work together	Parents initiative in supporting TMI	Involving siblings and community

Early Intervention Unit

Early Intervention Unit is started due to the increase in number of children with disabilities who required appropriate services, and also in part, due to capacity constraint in the day school of TMI. Services provided include special education, therapy, behaviour modification, and also they are prepared for school readiness.

19 (13 Boys, 6 Girls) 

Home Based Care

TMI also initiated Home Based Care (HBC) to persons with disabilities which limit their movement outside from home due to severe physical impairments, children of parents with disabilities, single parent or employed parents with no guardian to bring them to the centre. Persons living in and around the town of Churachandpur are given home based care. The faculty and teachers of TMI provide services like physiotherapy, speech therapy or special education.

9 (4 Boys, 5 Girls) 



Therapeutic Services

Therapeutic service is provided to regular students at TMI, Early Intervention and Home Based Care. Therapists developed and implement ongoing, long ranged customised intensive session according to the need of the students. Therapy provided - Physiotherapy, Speech Therapy and Mobility.

48 (30 Boys, 18 Girls)

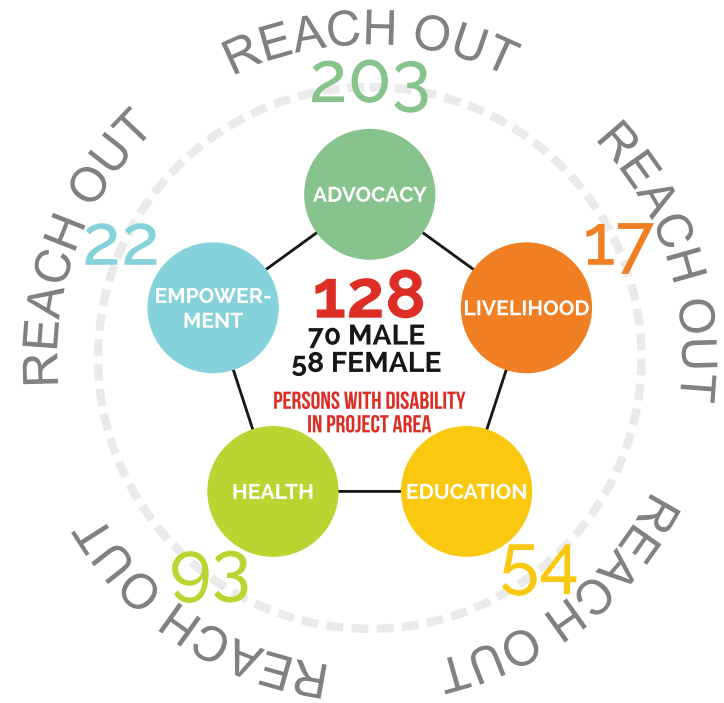


Vocational Rehabilitation Unit

Vocational Rehabilitation Unit is primarily planned to caterto students who will cross 14 years of biological age and no longer be eligible for day school as a pre-vocational training and an adult PwD who are not necessarily a student of TMI. Handloom Weaving Unit is running with plans for establishment along with Computer Unit and Hospitality Unit.

VILLAGE BASED REHABILITATION

Village Based Rehabilitation (VBR) is a Community Based Rehabilitation project based on the framework of CBR Matrix focusing on 20 villages of Thanlon subdivision, Churachandpur District. Supported by CBM, the project aims at addressing the all-round development of persons with disabilities through Advocacy, Education, Livelihood and Health Care.



RAISE-NE

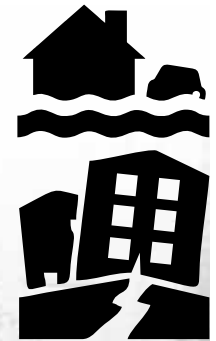
Regional Action on Inclusive Education in North East (RAISE-NE) is a project to complement and support SarvaShikshaAbhiyan (SSA) on inclusive education to improve the quality of education for students with disabilities in SSA or Govt Schools in selected district of Manipur, Assam, Meghalaya, Nagaland and Tripura. It is a 5 project supported by three INGO – CBM, Light for the World and Liliane Fonds (JVS).



Key Teachers Training	TMI Teachers Trained	Mainstream School reached	Regular school Teachers	SSA School selected	Inclusive campaign	State level Workshop/ Seminar
05	11	03	55	05	02	01

DISASTER RISK REDUCTION (DDR)

With the experienced of powerful earthquake in Manipur in 2016, with support from CBM, CCI unpreparedly intervened and support in rebuilding from disaster. It adopted a particular village – P Molding by providing temporary shelter, clothing, medical aid and everyday essential commodities. As Manipur is prone to natural calamities, CCI decided to have its own DDR and prepared the organization and its projects in case of natural calamities. CCI is the only organization in the District having its own safety policy and also having trained professionals for DDR.



Household reach	142
Population	1202
Temporary Shelter built	29



LIVELIHOOD PROJECT: NERCORMP

North Eastern Region Community Resource Management Project (NERCORMP) is a livelihood and rural development project aimed to transform the lives of the poor and marginalized tribal families in North East (NE) India. NERCORMP is a joint development initiative of the North Eastern Council (NEC), Ministry of DoNER, Govt. of India. CCI is one of its implementing NGO in the grassroots. Its broad objective is "To improve the livelihoods of vulnerable groups in a sustainable manner through improved management of their resource base in a way that contributes to the preservation and restoration of the environment"



No of Village reached

26 Village

No of TD Block Cover

3 Block

No of Household

1395 H/H

Total Population

7776 (Male-3835, Female
-3941)

Development Committee in the
grassroots

29 NaRM-G

No. of SHG

82 SHG

Agri-Horticulture beneficiaries

119

Livestocks beneficiaries

146

Non-Farm Sector

186

Infrastructure in villages

21 (Safe Drinking Water,
Box Culvert, Polypipe, GI
Pipes, Canal, CFC)



Village Social Mapping

SOCIAL INCLUSION CAMPAIGN

Social Inclusion campaign is part and parcel of the organisation since its inception. As part of its continuous campaign for social inclusion, Inclusive Christmas Carol is organised in and around Lamka town on December 16, 2016 with guestartist - Vunggohching, Rody, Lawmnakim, Biakmuan, Pauginmuan, Zolian, Mansiankim and Jenny.



EMPOWERMENT & ADVOCACY

DPO Capacity Building Programme jointly organized by CCI & CDDU (Churachandpur District Disable Union) on August 20, 2016. Activities and topics discussed during the programme were Motivational Speech, Person with Disabilities Acts and Policies, Right based approach, Group Discussion and Reflection

REACH OUT	234 persons with disabilities
	230 parents of persons with disabilities



VOLUNTEERS & INTERNS



Visitors and Donors



Evangelical Baptist Convention Leaders - Rev S Vung Minthang, General Secretary; Rev V Thangkhangin, Director of Missions and Rev S Gin Malsawm, Director of Social & Development at TMI in July 2016.



Sunita Singh, Consultant at The Malsawm Initiative on 6th December 2016.



Elizabeth Ninan and family visited MARC and provided training on autism to TMI Staffs on December 9, 2016.



Chief General Manager NABARD Manipur Pu AC Srivasta along with his wife, Mrs Vungi Guite and Chin Khup Guite at Malsawm Ability Resource Centre (MARC) on January 17, 2017.



Agrima Bhasin, an independent social policy researcher volunteered to document (monograph) our journey - initiative, practices and learnings in the last week of August, 2016. She published about TMI in THE HINDU



Major Radha Krishan, Town Commander, 25 Assam Rifles Tuibuong visited MARC on February 23, 2017

Ginmalsawm Tonsing Award

The Ginmalsawm Tonsing Award is instituted in 2016 to encourage persons with disabilities in academic learning at Higher Secondary Level from Churachandpur District. The Award is given to highest mark scorer in HSLC and HSSLC from any Board. The Award carries Rs. 5000.00 and Citation.

The first Awardee is Mr Letkholun s/o Jangthang of Kannanphai. The Award is given away on the 5th Unau Meet on June 26, 2016 at Malsawm Ability Resource Centre, Pearsonmun.



Supporting Partners

- ♥ **United Nations Development Programme (UNDP)** has extended its support through **United Nations Volunteers (UNV)** to CCI by sending four National UN Volunteer experts in the field of Speech Therapy and School Administration. The volunteers help in providing professional care and support to persons with disabilities and stakeholders through direct intervention, community intervention and stakeholder support. The sad thing is that contract for National UNV is ended in December 2016.
- ♥ **National Foundation for India** supports The Malsawm Initiative by providing staffs salary and various events
- ♥ **CBM India Trust** is supporting CCI in CBR program and Regional Action on Inclusive Education in the North East (RAISE NE).
- ♥ **Perkins Voice and Vision India (National Resource Training Centre for Visual Impairment and Multiple Disabilities, including Deaf-blind), Mumbai** is providing technical support to TMI, staffs honorarium, training staffs, equipments and mentoring.
- ♥ **Salwan Media, New Delhi** provides a platform to network with corporate, potential funders, etc.
- ♥ **District Administration** of Churachandpur District has support in various way for the welfare of persons with disabilities. They are also giving a constant support for TMI's day-to-day functioning.
- ♥ **Deendayal Disabilities Rehabilitation Schemes (DDRS)** under Ministry of Social Justice & Empowerment, Govt will support as special school (after clearing all necessary documents)
- ♥ **Snapdeal Sunshine** is the in-kind donation platform for better India. It is a platform to assist not for profits to raise in kind resources empowering users to donate Snapdeal products for NGOs. It is open for everyone who are willing to donate for Snapdeal Partner NGOs. Ms Kimremmawi Tonsing – Sr. Manager Communication- Snapdeal, New Delhi introduced CCI to Snapdeal Sunshine. CCI become one to the Snapdeal Partner NGO from on June 1, 2016
- ♥ **EGMI through PCI** support for physiotherapist at TMI.



Network Partners

LALPUITHLUAI FOUNDATION SCHOOL Pearsonmun	DISTRICT SOCIAL WELFARE Churachandpur	SARVA SHIKSHAN ABHIYAN (SSA) Churachandpur	NEHRU YUVA KENDRA Churachandpur
SOLACE ACADEMY S Munhoih, Singngat	DISTRICT MEDICAL BOARD (Disability)	CARMEL DENTAL CENTRE Hiangtam Lamka	HEBRON HAIR CUTTING New Lamka
	ELVEE ENTERPRISE L.V. Lane, New Lamka	CHURACHANDPUR LEGAL SERVICES AUTHORITY	

Case Study

27-year-old **Niangngaihnem** @ Ngaihnem was born hearing impaired. She lived with her mother and 4 younger sisters at Thuangtam Village, 80 km away from the town of Churachandpur. She limited her social participation and helped her widow mother in agriculture in the field but barely made any money out of it.

CCI started engaging Ngaihnem in livelihood activity under CBR project. Considering the interest and ability of Ngaihnem, she was provided training on weaving at the town of Churachandpur.



Her mother, the only bread earner of the family passed away at Thuangtam Village on August 2016. The unfortunate deceased of Ngaihnem's mother was the major challenge faced by the project and the family. Ngaihnem was left with a burden to look after her 4 younger sisters. She and her 4 siblings went to live with their maternal uncle in the town of Churachandpur.

Now she heads her own family living with her sisters independent of her relatives 1.5 kms away from TMI. She continues her sign language and functional education at TMI with an aim of upgrading and imparting skills and knowledge for her overall development.

Ngaihnem joined Skills Training Unit at TMI School after her 6 months of training on weaving. After receiving training on weaving using hand-loom, she learnt new skills and better knowledge of design and an enhanced understanding of market demands. Also, using hand-loom it took lesser time and effort to complete her work. Most importantly, the end product also turns out no less in quality than the one sold in the market.

In the past, Ngaihnem barely made any money of her own, but after receiving training, she earn at least Rs.1000 per lungi. She has opened her own bank account and is saving regularly towards her future. She plans to use the surplus income towards better health care and education for her younger sisters.



6th TMI Foundation Day –cum- Launching of Include Vidya Campaign (RAISE NE Project) and Emergency Relief Documentary was held at MARC on February 19, 2017. Pu. T Goukhomang ZEO/DPM SSA, Churachandpur inaugurated Include Vidya Campaign.



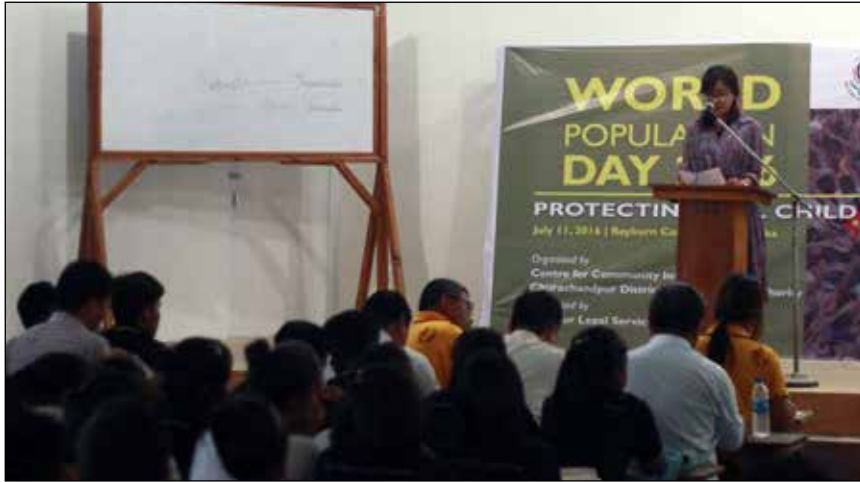
5th Unau (Sibling) Meet held on June 25, 2016 at MARC, Pearsonmun with the theme "Togetherness".



World Autism Day observed at MARC on April 4, 2016, poster on Autism in three local dialects Paite, Thadou/Kuki and Hmar was released by Pu Kammuanlal, MCS, and Additional Deputy Commissioner during the event.



Inauguration of Accessible toilet, Care-taker's Quarter and Handloom Unit held on October 13, 2016 at MARC, Pearsonmun. Pu Rakesh Balwal, IPS, SP Churachandpur inaugurated the toilet, quarter and handloom, Major LalramlianaHnamte, Divisional Commander, Salvation Army had a dedication prayer. Memento was given to all the donors.



World Population Day, jointly organized by CCI and Churachandpur District Legal Services Authority (CDLSA) on July 11, 2016 at Rayburn College Auditorium.



Children's Day observed at MARC on November 14, 2016. The event was jointly organized by CCI and Churachandpur District Legal Services Authority (CDLSA). Children's Day Gift sponsored by CDLSA was distributed to TMI students.



International Day of Persons with Disabilities observed on December 3, 2016 at Synod Hall, Churachandpur.



Annual Thanksgiving programme was held at MARC on December 16, 2016.



World Glaucoma Week- cum- First Snapdeal Donors Meet held at MARC on March 15, 2017.



Asian Ministerial Conference on Disaster Risk Reduction 2016 was held at Ashoka Hotel, New Delhi on 2nd November, 2016. Deputy Director & i/c DDR-CCI attended the conference.



Project Coordinator & Field Coordinator (CBR) attended Community Health & Development training organised by Basic Needs India with AAINA and TISS at Siddhart Village, Odisha on 18-24 March, 2016



OneGlobe 2017 Imperial Hotel, Delhi on February 10-11, 2017 was attended by Director, CCI and Golan Naulak

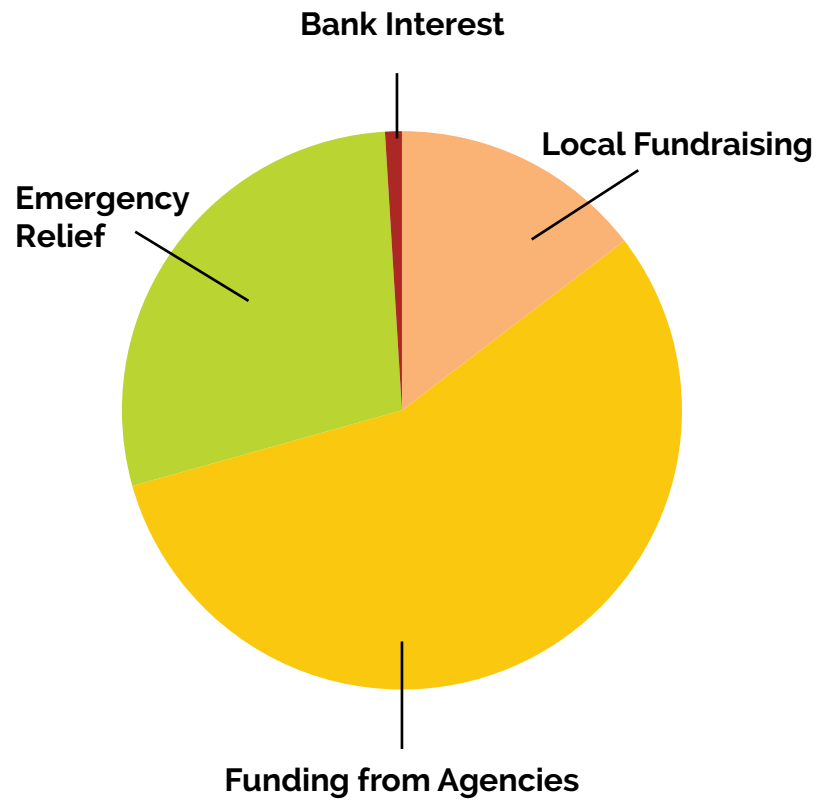


obituary

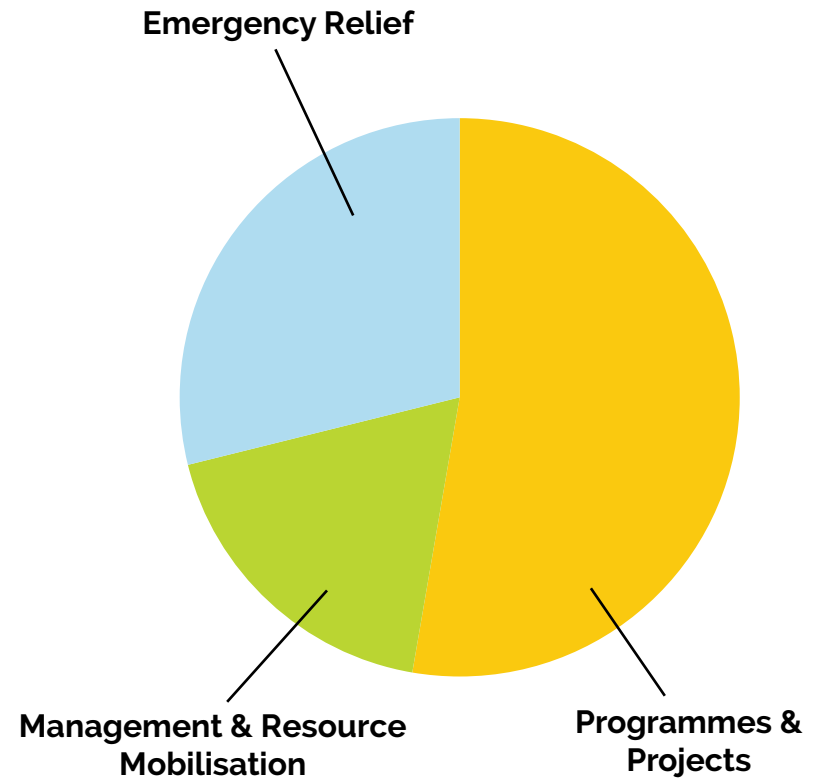
Miss Chinglunkim (4 years)
d/o N. Chinzabiak, Zoar Veng, Bungmual
passed away on February 8, 2017.
She is under our Home Based Care.

financial highlights 2016 -17

SOURCES



SPENDING





INDEPENDENT AUDITOR'S REPORT

INTRODUCTION:

We have audited the attached Balance Sheet as at 31st March, 2017 and the annexed Income & Expenditure Account and the Receipts and Payment Account for the quarter ended on that date of "CENTRE FOR COMMUNITY INITIATIVE)", of ZUIHNUAM, COLLEGE VENG, NEW LAMKA CHURACHANDPUR, MANIPUR - 795128 from the books of account, records, documents and vouchers produced to us. Our responsibility is to express an opinion on these financial statements based on our audit.

SCOPE:



We conducted our audit in accordance with standards of auditing issued by Institute of Chartered Accountants of India. Those standards require that we plan and perform the audit to obtain reasonable assurance about whether the financial statements are free of material misstatements. An audit includes examining, on a test basis, evidence supporting the amounts and disclosures in the financial statements. An audit also includes assessing the accounting principles used and significant estimates made by management, as well as evaluating the overall financial statements presentation. We believe that our audit provides a reasonable basis for our opinion.

OPINION:

- a. We have obtained all the information and explanations which to the best of our knowledge and belief were necessary for the purpose of our examination subject to our observation in this audit report.
- b. In our opinion, proper books of accounts have been kept by the Society, so far as appears from our examination of the books, subject to our observations to this report.
- c. Under the Scope of Audit we have not verified the physical implementation of the programme activities at field level and hence we are unable to comment the same
- d. The statements of accounts dealt with this report are in agreement with the books of account, subject to our observation to this audit report.
- e. In our opinion and to the best of our information and according to the explanations given to us, the said accounts, subject to our observations to this audit report gives the information in the manner so required and give a true and fair view:-
 - i) In the case of Balance Sheet, of the state of affairs of the society as at 31st March, 2016.
 - ii) In the case of the Income & Expenditure Account, of the Excess of Income over expenditure for the quarter ended on that date.



- iii) In the case of Receipt & Payment Account, of the receipts and payments during the year ended on that date.
- f) In addition, the procedures as per their society's by-laws have been generally followed by the concerned officers except as qualified elsewhere in the report.

For
SANJU CHAKRABORTY & CO.
Chartered Accountants
FRN: 327414E


CA SANJU CHAKRABORTY (FCA, DISA)
Proprietor
Mem No: 300910

Place: Churachandpur

Date: 29/06/2017

CENTRE FOR COMMUNITY INITIATIVE
 ZUIHNUAM ,COLLEGE VENG,NEW LAMKA,CHURACHANDPUR,MANIPUR
 REGD NO.6 OF 2002
 BALANCE SHEET AS AT 31st MARCH 2017

LIABILITIES	Amount	TOTAL (Rs.)	ASSETS	Amount	TOTAL (Rs.)
CAPITAL FUND			FIXED ASSETS		8,38,353.28
Opening Balance	18,72,286.08		<i>As per Schedule B</i>		
<i>Add: Surplus</i>	<u>-69,295.69</u>	18,02,990.39	CURRENT ASSETS ,LOAN AND ADVANCES :		
			Cash	99,230.00	
			Bank		
			SBI 11343708080	28,514.36	
			SBI 35939303908	23,197.00	
			SBI35939259266	5,19,817.00	
			SBI 31908571010	2,19,927.00	
			SBI 31905604642	<u>73,951.75</u>	9,64,637.11
Total:		18,02,990.39	Total:		18,02,990.39

As per ou report of even date annexed

For

SANJU CHAKRABORTY & CO.
 Chartered Accountants
 FRN:327414E

Sanju Chakraborty
 CA SANJU CHAKRABORTY
 Proprietor
 Mem no:300910



Dated:29/06/2017
 Place:Churachandpur

For
 Centre for Community Initiative

[Signature]
 Secretary

Secretary,
 Centre for Community Initiative

CENTRE FOR COMMUNITY INITIATIVE
 ZUIHNUAM ,COLLEGE VENG,NEW LAMKA,CHURACHANDPUR,MANIPUR
 REGD NO.6 OF 2002

INCOME AND EXPENDITURE ACCOUNT FOR THE YEAR ENDED 31st MARCH 2017

EXPENDITURE	AMOUNT	TOTAL (Rs.)	INCOME	AMOUNT	TOTAL (Rs.)
To Administrative Expenses			By DIRECT INCOME		
Staff Honorarium	4,18,400.00		The Malsawm Initiative Project (Schedule A2)		18,90,989.00
Office Rent	48,000.00		Grant from Christophel Blindend Mission (Emmergency Relief)		16,80,945.00
Printing & Stationery	26,060.00		Grant from Christophel Blindend Mission (Village Based Rehabilitation)		7,44,500.00
Travelling & Conveyance	35,055.00		Grant from RAISE		6,45,628.00
Meeting Expenses	35,085.00		Grant from NERCORMP		6,27,750.00
Electricity & Phone	32,540.00		Donation box		1,62,763.00
Papers & Periodicals	8,755.00		Donation from Wellwisers		96,527.00
Contingencies	21,897.00				
Maruti VAN Maintenance	42,265.00		By INDIRECT INCOME		
Audit Fees	10,000.00		Bank Interest		
Livelihood Project	3,33,458.27		SBI CCP 11343708080	16,992.00	
Special Events Observance	24,532.00		SBI CCP 31908571010	13,919.00	
Unau meet	30,319.00	10,66,366.27	SBI CCP 31905604642	2,985.00	
			SBI35939259266	201.00	
			SBI 35939303908	1,518.00	
			SBI 35939306807	-	35,815.00
To The Malsawm Initiative Project (Schedule A1)		17,44,525.25	By Excess of Expenditure over Income		69295.69
To CCI-CBM VBR (Schedule C)		7,43,049.00			
To CCI-CBM ER (Schedule D)		16,80,945.00			
To CCI-RAISE (Schedule E)		6,09,844.00			
To Depreciation on Fixed Assets		1,09,283.17			
Total:		59,54,012.69	Total:		59,54,012.69

As per ou report of even date annexed

For
 SANJU CHAKRABORTY & CO.
 Chartered Accountants
 FRN:327414E

CA SANJU CHAKRABORTY
 Proprietor
 Mem no:300910



Dated:29/06/2017
 Place:Churachandpur

For
 Centre for Community Initiative
 Secretary

Secretary,
 Centre for Community Initiative

CENTRE FOR COMMUNITY INITIATIVE
 ZUIHNUAM ,COLLEGE VENG,NEW LAMKA,CHURACHANDPUR,MANIPUR
 REGD NO.6 OF 2002

RECEIPTS AND PAYMENTS ACCOUNTS FOR THE YEAR ENDED 31st MARCH 2017

Receipts	Amount	Total (Rs)	Payments	Amount	Total (Rs)
To Opening Balance			By Administrative Expenses		
Cash	6,187.00		Staff Honorarium	4,18,400.00	
Bank			Office Rent	48,000.00	
SBI 11343708080	3,47,086.86		Printing & Stationery	26,060.00	
SBI 31908571010	4,95,444.27		Travelling & Conveyance	35,055.00	
SBI 31905604642	74,272.50		Meeting Expenses	35,085.00	
VIJAYA BANK 860401011001218	1,859.00	9,24,649.63	Electricity & Phone	32,540.00	
			Papers & Periodicals	8,755.00	
To The Malsawm Initiative Project (Schedule A2)		18,90,989.00	Contingencies	21,897.00	
To Grant from Christophel Blindend Mission (Emergency Relief)		16,80,945.00	Maruti VAN Maintenance	42,265.00	
To Grant from Christophel Blindend Mission (Village Based Rehabilitation)		7,44,500.00	Audit Fees	10,000.00	
To Grant from RAISE		6,45,628.00	Livelihood Project	3,33,458.27	
To Grant from NERCORMP		6,27,750.00	Special Events Observance	24,532.00	
To Donation box		1,62,763.00	Unau meet	30,319.00	10,66,366.27
To Donation from Wellwisers		96,527.00			
To Bank Interest			By The Malsawm Initiative Project (Schedule A1)		17,44,525.25
SBI CCP 11343708080	16,992.00		By CCI-CBM VBR (Schedule C)		7,43,049.00
SBI CCP 31908571010	13,919.00		By CCI-CBM ER (Schedule D)		16,80,945.00
SBI CCP 31905604642	2,985.00		By CCI-RAISE (Schedule E)		6,09,844.00
SBI35939259296	201.00		By Closing Balance		
SBI 35939303908	1,518.00		Cash	99,230.00	
SBI 35939306807	-	35,615.00	Bank		
			SBI 11343708080	28,514.36	
			SBI 35939303908	23,197.00	
			SBI35939259296	5,19,817.00	
			SBI 31908571010	2,19,927.00	
			SBI 31905604642	73,951.75	9,64,637.11
Total:		68,09,366.63	Total:		68,09,366.63

As per our report of even date annexed

For

SANJU CHAKRABORTY & CO.

Chartered Accountants

FRN:327414E

CA SANJU CHAKRABORTY

Proprietor

Mem no:300910



Dated:29/06/2017
Place:Churachandpur

For
Centre for Community Initiative

Secretary

Centre for Community Initiative

CENTRE FOR COMMUNITY INITIATIVE (CCI)
ZUIHNUAM, COLLEGE VENG, NEW LAMKA, CHURACHANDPUR, MANIPUR
REGD. NO. 6 OF 2002

SCHEDULE ANNEXED TO AND FORMING PART OF THE BALANCE SHEET AS ON 31st MARCH, 2017

SCHEDULE "B"
FIXED ASSETS

DESCRIPTION OF FIXED ASSETS	LAST ACCOUNT AS ON 01-04-2016	ADDITION DURING THE YEAR	SALE/DESCARDED DURING YEAR	TOTAL	DEPRECIATION		BALANCE AS ON 31-03-2017
					RATE	AMOUNT	
Furniture and fixture	1,87,105.95			1,87,105.95	10%	18,710.60	1,68,395.35
Tools and equipment	8,021.02			8,021.02	10%	802.11	7,218.91
Embroidery machine	-			-	25%	-	-
Building and playground	1,62,743.12			1,62,743.12	15%	24,411.47	1,38,331.65
Maruti van	1,27,646.96			1,27,646.96	15%	19,147.05	1,08,499.91
Room extension	45,198.00			45,198.00	10%	4,519.80	40,678.20
Carpet	-			-	10%	-	-
Laptop and accessories	19,318.50			19,318.50	10%	1,931.85	17,386.65
Printers	22,572.90			22,572.90	10%	2,257.29	20,315.61
Porch extension	35,356.50			35,356.50	10%	3,535.65	31,820.85
School Building	3,39,673.50			3,39,673.50	10%	33,967.35	3,05,706.15
Total:	9,47,636.45	-	-	9,47,636.45		1,09,283.17	8,38,353.28

As per our report of even date annexed

For

SANJU CHAKRABORTY & CO.

Chartered Accountants

FRN:327414E

CA SANJU CHAKRABORTY

Proprietor

Mem no:300910



Dated:29/06/2017
 Place:Churachandpur

For
 Centre for Community Initiative

(Signature)
 Secretary

Secretary,
 Centre for Community Initiative

**CENTRE FOR COMMUNITY INITIATIVE (CCI)
ZUIHNUAM, COLLEGE VENG, NEW LAMKA, CHURACHANDPUR, MANIPUR**

Regd. No. 6 of 2002

SCHEDULE ANNEXED TO AND FORMING PART OF THE RECEIPT & PAYMENT ACCOUNT FOR THE FINANCIAL
YEAR ENDED 31st MARCH, 2017

SCHEDULE "A1"

THE MALSAWM INITIATIVE (TMI)

Particulars	TOTAL (Rs.)
A) HONORARIUM	
Staffs Honorarium	5,86,600.00
B) Administrative Expenses	
Medicines	29,146.00
Printing & Stationery	54,955.00
Electricity/Telephone	25,000.00
Hospitality & Snacks for Children	1,32,405.00
News & Periodicals	20,450.00
C) Capacity Building/Empowerment	
Teachers Refresher Course	86,340.00
UNAU(Sibling with Disabilities)	97,456.00
Parents Meeting	28,549.00
In-House Training	54,231.00
Travelling & Conveyance	64,800.00
Maintenance	45,512.00
D) Early Intervention	60,000.00
E) Home Base Care	57,000.00
F) Education & Learning Materials	
Teaching Learning Materials	38,435.00
G) Pre-Vocational & Vocational Training	
Equipments & Raw materials	1,34,439.25
H) Accessible Toilet	1,80,000.00
I) Special Day Observance	
Special Day Observant	49,207.00
Total	17,44,525.25

As per ou report of even date annexed

For

SANJU CHAKRABORTY & CO.
Chartered Accountants
FRN:327414E

Sanju Chakraborty
CA SANJU CHAKRABORTY
Proprietor
Mem no:300910

Dated:29/06/2017
Place:Churachandpur

For
Centre for Community Initiative

Secretary
Secretary
Centre for Community Initiative

CENTRE FOR COMMUNITY INITIATIVE (CCI)
ZUIHNUAM, COLLEGE VENG, NEW LAMKA, CHURACHANDPUR, MANIPUR
 Regd. No. 6 of 2002

SCHEDULE ANNEXED TO AND FORMING PART OF THE RECEIPT & PAYMENT ACCOUNT FOR THE FINANCIAL SCHEDULE "A2"

THE MALSAWM INITIATIVE (TMI)

Particulars	TOTAL (Rs.)
Regular Contribution	
Registration fees	1,20,750.00
National Foundation for India Individual Donor (s)	5,29,057.00
Donation from EMGI c/o PCI (R)	39,500.00
Donation Box	2,16,000.00
Perkins Voice land Vision India	63,031.00
Local Fundraising	5,40,915.00
TLM & ADL	64,131.00
45,035.00	45,035.00
Contributors	
Contribution from Parents	80,030.00
Contribution from wellwishers	12,540.00
Contribution for Accessible Toilet	1,80,000.00
Total	18,90,989.00



For,
SANJU CHAKRABORTY CO.
 Chartered Accountants,
 FRN-327414E

Sanju Chakraborty
CA SANJU CHAKRABORTY
 Proprietor
 Mem No:300910

[Signature]
 For,
Centre for Community Initiative

Secretary,
Centre for Community Initiative

Secretary

Date:29/06/2017

Place: Churachandpur

**CENTRE FOR COMMUNITY INITIATIVE (CCI)
ZUIHNUAM, COLLEGE VENG, NEW LAMKA, CHURACHANDPUR, MANIPUR**

Regd. No. 6 of 2002

SCHEDULE ANNEXED TO AND FORMING PART OF THE RECEIPT & PAYMENT ACCOUNT FOR THE FINANCIAL
YEAR ENDED 31st MARCH, 2017

SCHEDULE "C"

VILLAGE BASED REHABILITATION

Position No	Budget Activity	Amount
01.01	Village level advocacy and awareness campaign	24,800.00
01.02	Institutional level advocacy	12,500.00
01.03	Strengthening and promoting various stakeholders	11,800.00
01.04	Sensitization and awareness program for PwDs on their rights and entitlements	15,230.00
01.05	CBR Workers training	34,000.00
01.06	Research and documentation	64,000.00
02.01	Sensitization and capacity building workshops for teachers of mainstream school	12,500.00
02.03	Providing Home base to PwDs	22,050.00
02.04	PwDs engaged in vocational activities	40,669.00
03.02	Lobbying amongst Doctors and other health care practitioners for assessment of disabilities	5,000.00
03.03	Awareness and sensitivity creation with state sponsored child	20,000.00
03.06	Providing appropriate basic therapeutic services	35,000.00
04.00	Human resource towards fulfillment of the Project	4,45,500.00
	Sub Total	7,43,049.00

As per our report of even date annexed

For

SANJU CHAKRABORTY & CO
Chartered Accountants
FRN:327414E



Sanju Chakraborty
CA SANJU CHAKRABORTY
Proprietor
Mem no:300910
Place:Churachandpur

Dated:29/06/2017

Place : Churachandpur

[Signature]
Secretary,
Centre for Community Initiative

**CENTRE FOR COMMUNITY INITIATIVE (CCI)
ZUIHNUAM, COLLEGE VENG, NEW LAMKA, CHURACHANDPUR, MANIPUR**

Regd. No. 6 of 2002

SCHEDULE ANNEXED TO AND FORMING PART OF THE RECEIPT & PAYMENT ACCOUNT FOR THE FINANCIAL
YEAR ENDED 31st MARCH, 2017

SCHEDULE "D"

EMMERGENCY RELIEF

Project Position No.	Description	Amount (Rs.)
01	Transitional Shelter	10,21,260.00
03	Food Items	85,915.00
05	Medical aid	90,000.00
06	Logistics & Local expenditure	1,07,169.00
07	Transport, incidentals , visibility cost & Administrative	1,03,700.00
08	Toilet	1,07,780.00
09	Water Pipeline	87,000.00
10	Assessment & Audit fee to R Dey & Associates, Kolkata	31,764.00
11	Assessment & Audit fee to Srivatsan & Gita Agency, Combalor	46,357.00
TOTAL		16,80,945.00

As per ou report of even date annexed

For

SANJU CHAKRABORTY & CO
Chartered Accountants
FRN:327414E



Sanju Chakraborty
CA SANJU CHAKRABORTY
Proprietor
Mem no:300910

Dated:29/06/2017

Place:Churachandpur

Beet G. J. J.
Secretary,
Centre for Community Initiative

CENTRE FOR COMMUNITY INITIATIVE (CCI)
ZUIHNUAM, COLLEGE VENG, NEW LAMKA, CHURACHANDPUR, MANIPUR

Regd. No. 6 of 2002

SCHEDULE ANNEXED TO AND FORMING PART OF THE RECEIPT & PAYMENT ACCOUNT FOR THE FINANCIAL
 YEAR ENDED 31st MARCH, 2017

SCHEDULE "E"

RAISE

	Result/Activity Description	AMOUNT (Rs.)
3.01	Awareness on Right to Education	52,110.00
3.07	Advocacy Training	20,000.00
5.07	State, Regional Workshop	98,002.00
06.01	Technical staff with partners	2,25,000.00
06.02	Coordination partners	22,500.00
06.03	Travel for Coordination , partners	9,000.00
06.04	Overhead Costs Partners	13,804.00
06.05	Accounting Costs, Partners	33,740.00
	Travelling Expenses	1,35,688.00
	TOTAL	6,09,844.00

As per ou report of even date annexed

For

SANJU CHAKRABORTY & CO.

Chartered Accountants

FRN:327414E



CA SANJU CHAKRABORTY

Proprietor

Mem no:300910

Dated:29/06/2017

Place:Churachandpur


 Secretary,
 Centre for Community Initiative



*Together
we can go
further*

back cover inside: this page intentionally left blank



www.communityinitiative.in