



Centre for Community Initiative
Annual Report 2015 – 2016

Front cover art drawn by Songgoumung with a theme
'**Togetherness**', he painted his elder brother Ginmalsawm and
his house in colour and his favourite fruit - mango
© 2016

Administrative Office:

Nehru Marg, Central Lamka,
Churachandpur 795128, Manipur

Project Office:

Malsawm Ability Resource Centre, Pearsonmun,
Churachandpur 795006, Manipur

Registered Office:

Zuihnuam Road, New Lamka,
Churachandpur 795128, Manipur

www.communityinitiative.in

Annual report

2015 - 2016

REGISTRATION DETAILS:

- * Regn. No. 6 of 2002 under the Manipur Societies Registration Act, 1989
- * Regn. No. 24/CCP/2010 under the Directorate of Social Welfare Government of Manipur
- * Regn. No. 76 of 2010 under Persons with Disabilities Act, 1995;
- * Regn. No. 071216261488009/MR/CP/AUTISM/MD with National Trust under Ministry of Social Justice & Empowerment, Government of India
- * Registration No. OC-579/80G/CIT/JRT/2011-12/6526-36 under Section 80G of the Income Tax Act, 1961 for Tax Exemption
- * Registration No. OC-1141/12A/CIT/JRT/2011-12/1291-93U/S 12A of the Income Tax Act, 1961
- * Registration No. 194160092 under Foreign Contribution (Regulation) Act, under Ministry of Home Affairs, Govt of India
- * PAN Card No. AAAAC7916L

MILESTONE

Restructuring of CCI to engage with disability in areas of Advocacy, Awareness Campaigns and Mobilizing Parents of Disability

2007

2008

- Strengthening of CCI to carry out activities such as Advocacy, Awareness Campaigns
- Mobilizing Parents and Conducting Monthly Parents' Meeting

- Publication of Right to Information (RTI) guide for Persons with Disabilities in Local Language
- Organised Disability Assessment Camps, Awareness campaign is gaining ground.

2009

2010

- Advocacy, Awareness and Parents counselling and meeting is part of the regular activities.
- Response from most influential institution in the society – the church taking more initiatives on disability through leaders orientation.
- Campaign for establishing school for special needs children started.

2011

- The Malsawm Initiative (A School for Children with Special Needs)/TMI came into being. His Excellency Gurbachan Jagat, Governor of Manipur inaugurated
- The School started off with 15 Students with all categories of Disability and 8 in the wait-list with 4 Staffs
- A Van was donated by Deputy Commissioner, Churachandpur.
- Voice and Vision India, Mumbai gave opportunity to join Teacher Training course at Mumbai, Ahmadabad and Chennai.

2012	2013	2014	2015	2016
<ul style="list-style-type: none"> - 12 students are enrolled - Appropriate service and support are provided to student at the capacity of the institution. - Formation of Parents Support Group (PSG) - Formation of Churachandpur District Disabled Union (CDDU) - Three staffs sent for a course on Diploma in Special Education at Helen Keller Institute, Mumbai - Technical Support from Voice and Vision India, Mumbai - Network Support from Salwan Media, New Delhi - District Administration awarded Excellency in Social Sector during Indian Republic Day Celebration. 	<ul style="list-style-type: none"> - Acquire land for 'Ability Village (An Empowerment Centre for Persons with Disabilities). UN Resident Coordinator & UNDP Resident Representative Ms Lise Grande unveiled foundation stone for Ability Village. - One staffs sent for a course on Diploma in Special Education at Helen Keller Institute, Mumbai 	<ul style="list-style-type: none"> - 4 United Nations Volunteer with different professions (School Administrator, Speech Therapist, Physiotherapist, Special Educator) joined CCI - The number of students enrolled was increased to 25 - TMI was shifted to its new campus at Malsawm Ability Resource Centre (MARC), Pearsonmun - Socio-Economic Survey of Disabilities in Churachandpur with support from CBM started - Constitution of District Medical Boards - Open Door Service and Home Based Care started. - Eimi Achiever Award in Community Services received, an award initiated by District Administration 	<ul style="list-style-type: none"> - The number of students enrolled is 25 - Village Based Rehabilitation / CBR started with support from CBM - District Medical Board constituted with the CCI initiative - Advocacy at Institutions and Villages strengthen - Open Door Service served more than 30 PwDs 	<ul style="list-style-type: none"> - The number of students enrolled increased to 30 - Ministry of Social Justice & Empowerment, Govt of India approved to support The Malsawm Initiative. - Early Intervention Unit started. - Handlooms are installed for Vocational Unit at MARC - Accessible Toilet constructed - Joined Regional Action on Inclusive Education in North East (RAISE NE) project. - Partner NGO in a livelihood project – NERCORMP - Intervened in reconstruction (with support from CBM) of P Molding this was damaged due to earthquake. - Ginmalsawm Tonsing Award is constituted to encourage PwDs students in Secondary School.



THE ORGANISATION – CENTRE FOR COMMUNITY INITIATIVE

Centre for Community Initiative (CCI) is a non-governmental, non-political and not-for-profit organization started on March 7, 2002 by like-minded individuals dealing with various issues to provide a better society through community initiative and participation towards their welfare. CCI was restructured in 2007 when the Secretary, who is a father of a blind child, felt the urgent need to form a parents' group that would meet regularly to share their problems, to encourage one another in challenging times and to work towards creating a more accepting society.

Centre for Community Initiative is devoted to persons with disabilities advocating, facilitating and empowering parents, siblings and persons with disabilities through practical support, assessment and counseling. It involves in mapping positive and supportive environment for persons with disabilities; encourages inclusive education and advocates for their rights and dignity. It shares, listens, commits and works towards building a responsive society in which Persons with disabilities grow in self-esteem and enjoy full participation in the community.

5

Believes

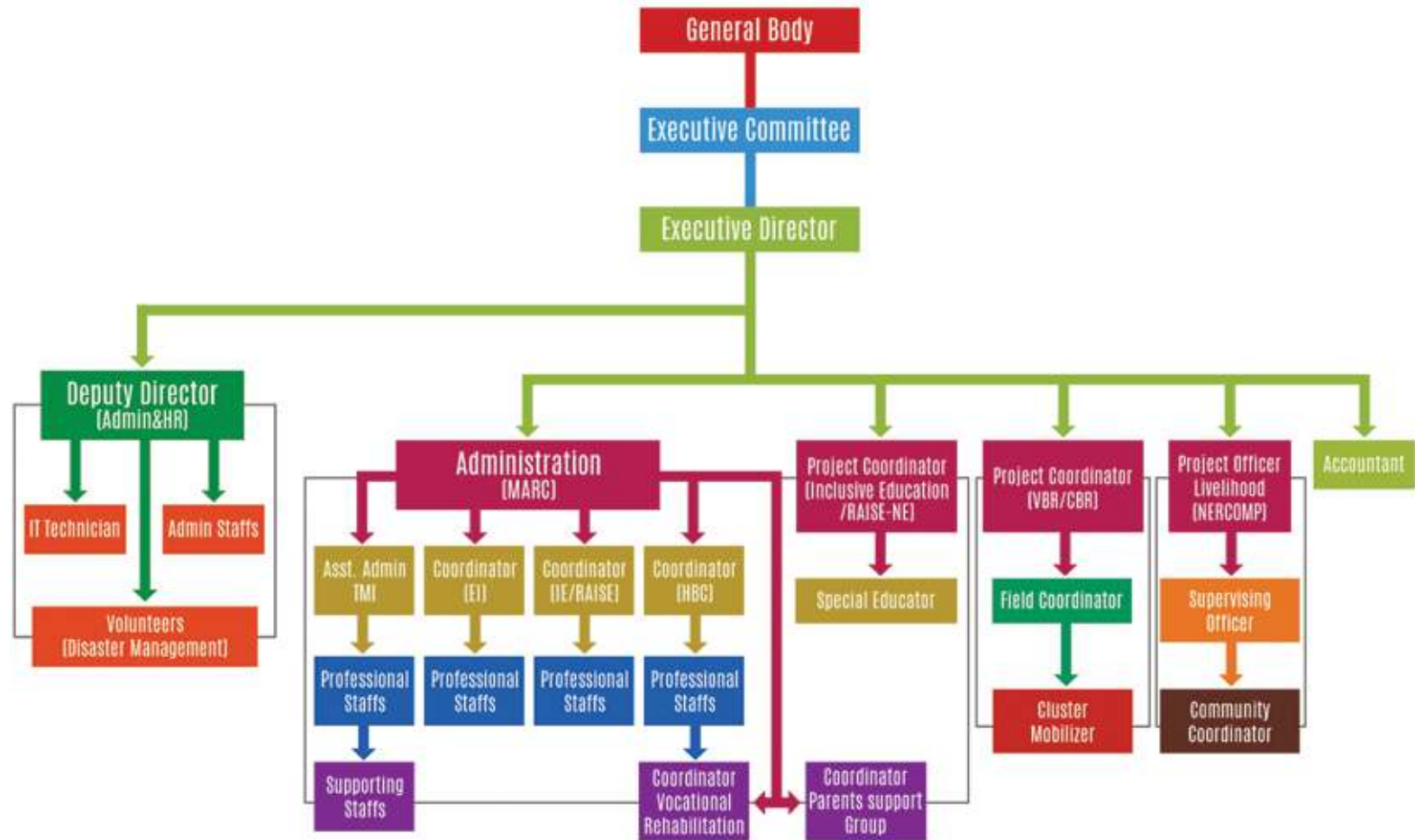
We believes that each individuals, communities, institutions and government contribute in their own way to making the world a better place to live in.

Mission

Our mission is to build and strengthen society in health care, education and socio- economic development through community initiatives and participation

ORGANOGRAM

6



I. MALSAWM ABILITY RESOURCE CENTRE (MARC)

The Malsawm Ability Resource Centre is a project of CCI which aims at establishing a resource centre for the welfare and development of Persons with Disabilities. It envisions the facilitation of capacities to meet the needs of person with disabilities in the region and promote a holistic approach for providing services to person with disabilities right from Early Intervention through Education, Recreation, Vocational Training, Livelihood Programme and Independent Living. The foundation stone was laid in 2013 by Pi Lise Grand, UN Resident Coordinator & UNDP Resident Representative in India.



Components of MARC are as follow:

7

I.1 THE MALSAWM INITIATIVE (A SCHOOL FOR CHILDREN WITH SPECIAL NEEDS)

The Malsawm initiative (TMI) is a School for Children with Special Needs started in 2011. TMI embarked on its journey of realizing a dream – to provide equal opportunities and create a better world for everyone – by starting a school for children with special needs.

The academic session of 2015 was closed on 13th December 2015 and was reopened on 8th of February 2016. 5 new students are enrolled for the academic session. Currently, there are 30 students of cross disabilities.





1.1.1 Classroom Management:

The students are divided into 4 groups according to their ability, age and cognitive abilities.

Group 1: Play Group

Group 2: Functional Group

Group 3: Academic Group

Group 4: Vocational Group

There is 1 Special Educator in each classroom with 1 Assistant Teacher. There is also a Physiotherapist, Speech Therapist, Braille Instructor and Care taker.



1.1.2 Academic & Activities:

Admission process begins at the month of December and January.

TMI follows a strict admission procedure which includes:-

- /// Assessment
- /// Home Visit
- /// Case Study
- /// Parent's Counseling and Orientation
- /// Development of Individual Education Plan (IEP)

THE CURRENT SYLLABUS OF TMI IS LISTED BELOW:

Curriculum

- /// Regular School Nursery and SSA Syllabus for Class I & II, English, GK and Mathematics adaptive curriculum

- /// Concepts of English Alphabets, Numbers, Shapes, Colors, Living and non-living things.
- /// Activities of Daily living Skills
- /// Life Skills
- /// Language and Communication Skills
- /// Braille and Pre-braille
- /// Sign Language
- /// Pre-Vocational Skill
- /// PT (Physical Training)
- /// Cognitive Skill
- /// Art & Craft
- /// Extra-Curricular Activities

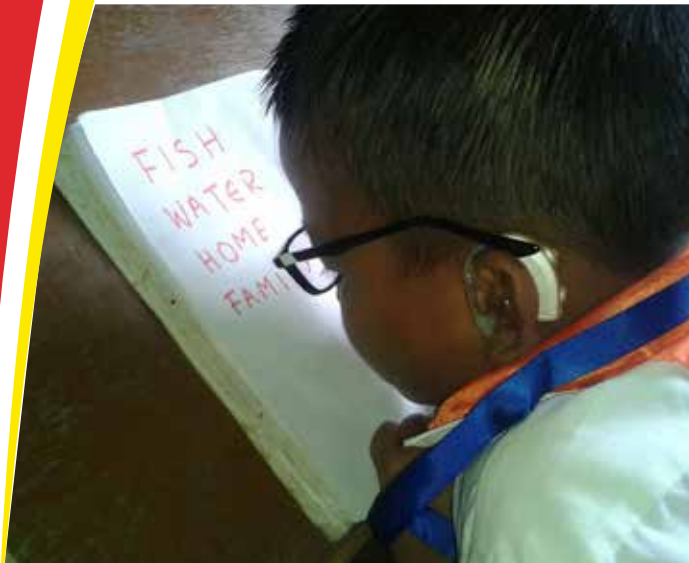


I.1.3 Monthly Evaluation:

Monthly Evaluation is conducted every last Friday of the month to evaluate the performance of each student. The teachers reviewed the Individual Education Plan (IEP) of each student to see if the students have achieved or lacked any of the monthly targets.

This is then reported to the parents every last Saturday of the month. In this meeting, the teachers and parents discussed any issues related to the child or school. Targets for next month are then prepared according to the needs of the child





10



1.1.4 Sibling Volunteer:

TMI encourages siblings of its students to Volunteer at the school. The objective of this activity is to sensitize the siblings at the same time promote volunteerism. The siblings are assigned to assist the Special Educator in the classroom. This gives them a first-hand practical experience on how to work with their sibling with disabilities. They are also given the opportunity to participate in different awareness programme and trainings.

1.1.5 Parents Support Group:

The Parents Support Group is a core component of CCI. It is constituted by parents of TMI. The Parents Support Group has its own separate committee members. They are actively engaged in issues related to proper functioning and maintenance of the school. They assist the school in organizing different programmes like fund raising activities, awareness programme and other activities. At TMI, parent's involvement is a crucial importance as it determines the development of the child.

1.2 EARLY INTERVENTION UNIT (EIU)

Early Intervention Unit (EIU) was inaugurated on the 23th of February 2016, at MARC by Dr. Sara Verughese Regional Director Christofell Blinded Mission (CBM). The EIU was started due to the increase in number of person with disabilities who required appropriate services. The EIU is open on all week days from 1:00 to 5:00 pm at MARC. The teachers at TMI are engaged for this programme after school.

Total No. of Cases Registered 40

Total Male 26

Total Female 16

Service Provided –

- /// Speech Therapy
- /// Physiotherapy
- /// Special Education

A total of 40 cases are registered for EIU of which 26 cases are male and 16 cases are female. The services provided include Speech Therapy, Physiotherapy and Special Education according to the need of the individual. Early Intervention Unit is on-going and there are new cases continuously availing the services.



I.3 HOME BASED CARE (HBC)

TMI also initiated Home Based Care (HBC) where UN Volunteers and staff's extended their services to the homes of persons with disabilities. There are certain criteria to be fulfilled in order to be registered for home based care, such as:

1. Person with disabilities and unable to move out from home due to severe physical impairments,
2. Children of parents with disabilities,



3. Single working parents who have no guardian to bring them to the centre etc.

Five (5) persons living in and around the town of Churachandpur were given Home Based Care. The staff and teachers of TMI pay a visit once or twice a week to provide services like physiotherapy, speech therapy or special education.



12

2. VILLAGE BASED REHABILITATION

Village Based Rehabilitation (VBR) is a customised Community Based Rehabilitation project based on the framework of CBR Matrix focusing on 20 villages of Thanlon subdivision, Churachandpur District. Supported by CBM, the project aims at addressing the all-round development of persons with disabilities through Advocacy, Education, Livelihood and Health Care.

2.1 OPERATIONAL AREA:

The current project is operating in 20 villages of Thanlon Sub-Division/Block of Churachandpur, Manipur. These 20 villages are divided into 4 Clusters comprising of 5 villages each. Mualnuam, Sinzawl, Bukpi and Thanlon are the Cluster Headquarter of VBR project. There are 119 primary beneficiaries under this project.

2.2 PROJECT ACTIVITIES:

The work of VBR collectively focused on activities that will upgrade the living quality of PwDs and creating an opportunity to access and enjoy their rights through community participation. As a one year project, VBR entails a set of activities such as Awareness and Sensitization, Training, Identification, Recognition, Group Formation, Empowerment and Delivery of appropriate health care services to PwDs and its stakeholders.

a) Health:

- /// Awareness is raised about early identification and Intervention among Parents, Local health workers (ASHA & Anganwadi) and larger community.
- /// Awareness is raised about the importance of home based care for Parents and Care givers.
- /// Disability assessment Camp is conducted in the project area for PwDs living without any access to health care service.
- /// PwDs are assisted to obtain Disability Certificate/Disability ID card.



b) Education:

- /// Teachers in the project area are sensitized through awareness programme on identification checklist and their roles and responsibilities in the community.
- /// Teachers were given training on inclusive education, development of IEP and Teaching Learning Materials.
- /// Awareness was raised about Right to Education for PwDs in the community.



14

c) Livelihood:

- /// PwDs are identified for income generating unit.
- /// PwDs are linked to opportunities for skills development.



d) Social Participation:

- /// Community members are sensitized on inclusive society and participation of PwDs in the community.
- /// Parents, Caregivers and Siblings of PwDs are trained on the importance of their roles and responsibilities towards PwDs.



e) Advocacy and Empowerment:

- /// Links are established with government health department at local and district level.
- /// PwDs are sensitized on their Rights and Entitlements.
- /// Parents support group is formed in the project areas.
- /// Parent support group are included in planning, monitoring and evaluation of the programme.



3. REGIONAL ACTION ON INCLUSIVE EDUCATION IN NORTH EAST (RAISE-NE)

RAISE- NE is a 5 years pilot project initiated to complement the programme of Sarva Shiksha Abhiyan on Inclusive Education to improve the quality of education for children with disabilities in government/government supported schools in selected districts of Assam, Meghalaya, Manipur, Nagaland and Tripura. The project is supported by three international organization namely ChristofellBlinden Mission (CBM), Light for the World and Liliane Fonds (Jan VikasSamitiin India), all of whom have major presence in the North Eastern States of India.

The objective of this project is to improve the quality of education for children with disabilities in neighbourhood government schools.

And aims to collaborate with SSA to improve the quality of education for children with disabilities in government and government aided schools in selected districts of 5 states. CCI is the partner organisation for this project in Manipur

16



MAJOR ACTIVITIES TO BE CONDUCTED UNDER THE RAISE-NE

- /// Building Capacity of Partner Organization for Inclusive Education
- /// Enhancing Teacher Competence in Inclusive Education
- /// Advocacy for attitude change among all stakeholders
- /// Documenting and Disseminating Innovative approaches and Good practices



MAJOR ACTIVITIES TO BE CONDUCTED IN COLLABORATION WITH SSA ARE

- /// Conduct baseline study of selected 5 government/SSA schools
- /// Provide Short term training to government/SSA teachers on Inclusive Education
- /// Exposure visit to well managed SSA schools
- /// Exchange visits by government/SSA teachers to other partner organizations
- /// Development of Teaching Learning Materials and other innovate teaching aids
- /// Organize events to promote Inclusive Education among government/SSA Schools
- /// Awards and Recognition to students and teachers of government/SSA
- /// Follow up on CCE in selected government/SSA schools

4. EMERGENCY RESPONSE TO EARTHQUAKE IN MANIPUR

(AN EARTHQUAKE RELIEF PROJECT MANAGED BY CCI, SUPPORTED BY CBM)



Manipur experienced a very powerful earthquake at pre-dawn on January 4, 2016 (measuring 6.8 on Richter's scale), several buildings, public places and houses in different areas of Manipur were destroyed.

Soon after our partner CBM (Christoffel Blindenmission) became alert about the incident, they are interested to intervene by giving a helping hand to those affected areas and therefore requested (CCI) to conduct an assessment in the affected areas. CCI constituted an Emergency Relief Unit Team and that's how the project **Emergency response to earthquake in Manipur P-3360 2016** began. CCI ERU (Emergency Response Unit) took the first step of the project by participating in an emergency relief meeting (Joint Rapid needs assessment) at Disaster Management Institute Building, Babupara, Imphal on January 6, 2016 organized by Sphere India. During the relief meeting, Sphere India shared the status and lists of the earthquake affected areas in Manipur collected from various sources. CCI ERU Team learned that Leimakhong was marked as one of the most affected areas wherein the number of life lost, injuries and property damaged was recorded the maximum in this area. Thereafter, CCI ERU Team visited and conducted an need assessment in the village. Through the assessment, the team enlisted 29 beneficiaries under the criteria of houses which were totally damaged by the earthquake. Taking into account psychological, physical and social needs, CCI believe that providing these affected families with temporary shelter and their basic needs could help mitigate their sufferings. As per the project plan and proposal, the project duration is for four months i.e. from February 1, 2016 to May 31, 2016.



PROPOSED ACTIVITIES TO BE IMPLEMENTED UNDER THIS PROJECT ARE:

Providing food and non-food items:

Food items: Rice, Vegetable (in cash), Cooking oil are provided for two months

Non food items: Solar lamp, blankets, Water pipe, Toilet and Transitional Shelter

Construction materials provided to the beneficiaries:

For T-Shelter: CGI Sheets, bamboo, Nails for CGI with Rubber Washer, Wood beam and plank, cement and lime powder with colour concentrate, Red paint with thinner

For Toilet: CGI Sheets, Rhino sheet, Local commode with pipe

Labour Incentives: During the construction period, volunteers from the beneficiaries and community are provided with labour incentive for two months.

Service Provided: PFA (Psycho First Aid) Counselling and Health Assessment (Treatment for minor injuries)



CCI ERU Team:

All the CCI Staffs are involved in the project since the assessment period till date, however in order to carry out the project work successfully, CCI appointed personnels for the respective activities on a contract basis and look after by Dy. Director of CCI. These staffs are supported by volunteers and local media & press team are also engaged for documentation of the project.

5. CAPACITY BUILDING

5.1 UNDER MARC

- /// Attended RCI Regional Conference: 5Special Educator of TMI attended RCI Regional Conference held at Manipur University on the 20th Jan, 2016.
- /// Workshop at NIPCCD, Guwahati on May 12, 2015. The workshop was attended by School Administrator.
- /// Training on Community Based Disaster Risk Reduction and School Safety & Project Progress Report on 17 to 20 November 2015. The Training was attended by School Administration, Speech Therapist, Project Coordinator (VBR) and Deputy Director.
- /// Attended National conference organized by ABU & ICEVI hosted by BPA at Amabaded, Gujarat (India) on March 11-13, 2015. The National conference was attended by Director and presented paper on 'Sibling – for inclusion'
- /// Disability Awareness: Programme organized by Composite Regional Centre Guwahati, in collaboration with SHED at Lamka. The School Administrator and Speech Therapist participate as resource persons.



5.3 UNDER VBR

a) **Community Based Disaster Risk Reduction and School Safety and Project Progress Report (PPR):**

CBM in collaboration with Sphere India organized three days training programme for the partner organization. The training was organized at Montfort School, Guwahati from 17th-19th Nov 2015. In this training, the Secretary, Project Coordinator, Accountant and Special Educator participated in the three days training programme as a partner organization.

b) **Training on Community Mental Health and Development**

Community Mental Health and Development training was organised by Basic Needs India in Collaboration with Aaina and TISS at Siddhart Village, Jatni, Odhisa from the 18th-24th March, 2016. Project Coordinator and Field Coordinator under VBR project attended the one week training programme. Resource persons Dr. Mani and Dr. Raja Ram of BNI, Shena of Aaina, Vanhana BNI trustee and Prof. Srilatha Yuva of TISS facilitated the training programme.

5.3 UNDER RAISE-NE

- /// The Executive Director, School Administrator and one Special Educator participated at the Inception Workshop of RAISE NE at Don Bonsco Institute, Kharguli, Guwahati. March 3-6, 2015.

6. VOLUNTEERS

- // Visited by Media Team from Chennai visited CCI on March 12, 2016
- // A team of dedicated and committed professional from U.S came and visited CCI to show us, guide us and teach us, especially on Autism. Which will enhance TMI teachers and CCI staffs to have more knowledge and experience on Autism on June 16th and stayed till 30th June , 2015

7. VISITORS

- // Monica Benerjee, Director Programme of NFI visited at TMI on 5th June 2015.
- // EFCl, Rengkai Naupang Sunday School Department visited TMI on 2nd December 2015 to show their support and appreciation of CCI and TMI contribution towards children with special needs and to convey their acceptance of person with disabilities within their own Sunday School Department.



8. EVENTS & SPECIAL DAY

- // **5th Foundation Day:** CCI observed its foundation day on the ----- of every year. TMI was started in 2011 and this year is its 5th Foundation Day. The programme was held at MARC with CCI staffs, students, parents and well-wishers. The programme was graced by Pu Henkholun Doungei, Youth Co-ordinator, NYK, Churachandpur as a Special Guest.
- // **Unau Meet 2016:** Encouraging sibling of PwDs for their welfare of their sibling, 4th Unau (Sibling) Meet was observed on June 19, 2015. Various activities where siblings could share their talents and showcasing is organized. A team of professional from US joined the event.



24

- /// **World Autism Awareness Day:** On April 2, 2015 CCI observed world autism awareness day at its premise. In 2015, 5 more children with Autism were identified and enrolled at TMI, making a total of 7 children with autism at present. Since there is not much awareness on Autism, CCI has taken initiative to spread more awareness in the community.
- /// **December 3, 2015 International Day of Disabilities:** CCI in collaboration with Nehru Yuva Kendra, Churachandpur observed this day at MARC. The theme of the event was 'Inclusion matters: access and empowerment of people of all abilities'. There was special performance from NYK and students of TMI. Pu Henkholun, Youth Co-ordinator, NYK was invited as Chief Guest. Pu Pauzagin Tonsing, Executive Director and Ms Kaylie Lalrokim, UN Volunteer, School Administrator gave a speech on this event.
- /// **December 12, 2015 Thanksgiving Programme:** At the end of each academic session, TMI organized a Thanksgiving programme to highlight the achievements and challenges faced during the year and sharing of experiences. Pu Dr. T. Pumzathang was invited as Chief Guest and thanksgiving prayer by Pu T. Thangsuanpau, Advocacy-Coordinator of CCI.

9. AWARDS AND RECOGNITION

- CCI was also selected as the finalist for 6th Spirit to Humanity Award organized by AmeriCares, Mumbai in 2015 and received Certificate of Merit.



10. SUPPORT & PARTNER

10.1 SUPPORTING PARTNERS

- /// **United Nations Development Programme (UNDP)** has extended its support through **United Nations Volunteers (UNV)** to CCI by sending four National UN Volunteer experts in the field of Speech Therapy and School Administration. The volunteers help in providing professional care and support to persons with disabilities and stakeholders through direct intervention, community intervention and stakeholder support.
- /// **DDRS, Department of Disability Affairs, Ministry of Social Justice & Empowerment, Government of India** will be supporting The Malsawm Initiative (A School for Children with Special Needs) from 2015-16, process is under taken.
- /// **CBM India Trust** is supporting CCI in CBR program and Regional Action on Inclusive Education in the North East (RAISE NE).
- /// **Perkins Voice and Vision India (National Resource Training Centre for Visual Impairment and Multiple Disabilities, including Deaf-blind), Mumbai** is providing technical support to TMI, staffs honorarium, training staffs, equipments and mentoring.
- /// **Salwan Media, New Delhi** provides a platform to network with corporate, potential funders, etc.
- /// **National Foundation for India (NFI)** has supports TMI in human resources and various activities
- /// **District Administration** of Churachandpur District has support in various way for the welfare of persons with disabilities. They are also giving a constant support for TMI's day-to-day functioning.
- /// **Snapdeal** is supporting CCI by creating platform for donors interm of goods and kinds.
- /// **Ample Water**, Pearsonmun provide safe drinking water at The Malsawm Initiative since 2011 free of cost.



Empowered lives.
Resilient nations.



10.2 NETWORK PARTNERS

- // **Lalpuithluai Foundation School** support since the inception of The Malsawm Initiative and TMI is like their sister school.
- // **Arcadia School** partners in admitting the Graduate Students of TMI to their mainstream educational institution which is not commonly accepted by other educational institutions.
- // **District Social Welfare** partners in organising events and programmes on special occasions in the district.
- // **Sarva Shikshan Abhiyan (SSA)** partners in exchanging resource persons for training programmes on disability.
- // **Nehru Yuva Kendra Churachandpur** and CCI work closely in terms of Youth volunteerism. CCI is affiliated to NYK as a youth lead organisation.
- // **District Medical Board (Disability)** is constituted with the initiative of CCI and it collaborated in organising camps and issuance of disability certificates. Churachandpur is the only District having its own Medical Board in Manipur.

10.3 TAPPING LOCAL RESOURCES

10.3.1 Charity Shop

To generate income, the organization started a charity shop which is one of its kinds in the district. The shop sells used goods from bed sheets to computer parts donated by the local community. Regular pickup is arranged and door-to-door collection is also done at times.

10.3.2 Pledge Card

CCI has developed a pledge card for individuals who are willing to support the cause. The card is distributed to individuals, groups, organizations and communities to seek the support and cooperation of the community in fighting the cause for disability.

10.3.3 Donation Box

Charity Boxes are kept in the shop or house of our well-wishers. Collection is made on monthly or based on the wish of the donors. It is one of our major source of incomes.