



centre for
**COMMUNITY
INITIATIVE**

inform • inspire • initiate



ANNUAL REPORT

2022 - 2023

Message from Director

It is with great pleasure bring out Annual Report 2022-2023 of Centre for Community Initiative (CCI). This report abridges our collective effort over the year, highlighting the remarkable strides we have made in our mission to empower and uplift the most marginalised communities with special reference to persons with disabilities (PwDs).



After covid-19 pandemic, 2022-2023 was a year of great challenges, but it was also a year of even greater resilience, improvement, and collaboration. Our commitment to inclusive and community development remained unwavering.

We witnessed the deep impact based on CCI's four thematic – disability, livelihood, advocacy & community empowerment and disaster - addressing the unique needs of the communities we serve and striving to make a lasting impact. Hundreds of children with disabilities received appropriate services and many could join mainstream society while thousands of adult PwDs could access their rights and entitlement. Farmers and the rural poor began having started sustainable livelihood, and alternate of livelihood to change over from the aged old jhuming cultivation.

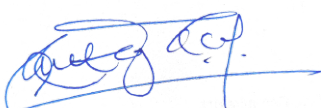
As part of an implement to Right to Education (RTE) and Rights for Persons with Disabilities Act, 2016 (RPD Act) for inclusive education, CCI continued its innovative solutions by way of adopting six mainstream schools including two SSA/Government Schools to make it as an inclusive school. The program provide capacity building to these school authority and staff and handholding support in a continuous manner.

As we remained steadfast in our commitment to financial transparency and responsible resource management, the turn over for 2021-2022 is INR 1.35 crore, and increased by 32.42% for this financial year. We take pride in ensuring that every contribution we receive is used efficiently and effectively.

Our partnerships with local organizations, government agencies, national and international donors have grown stronger, broadening the scope of our work and extending our reach to more beneficiaries in need.

I extend my heartfelt appreciation to the dedicated CCI team, whose passion and dedication are the driving force behind our achievements. And we extend our profound gratitude to our donors, supporters, and partners. Your trust in CCI and your generous contributions have been instrumental in our ability to create positive change in the communities we serve.

Sincerely,



Pauzagin Tonsing

Registered & Administrative Office:

Malsawm Ability Resource Centre (MARC), Pearsonmun, Lamka,
Churachandpur 795006, Manipur, India

© 2023

Organisation's legal status

Regn no. 6 of 2002 under the Societies Registration Act, 1989;

Regn no. 24/CCP/2010 under the Directorate of Social Welfare, Government of Manipur;

Regn no.76 of 2010 under Persons with Disabilities Act, 1995;

Regn no.194160092 under FCRA with Ministry of Home Affairs, Government of India;

12A Regn No : AAAAC7916LE20214




80G Regn No : AAAAC7916LE20215

PAN AAAAC7916L;

Labour Identification Number : 1-3515-9725-7 under Ministry of Labour & Employment, Govt of India;

Regn No. MCEN1952254387 with National Trust under Ministry of Social Justice & Empowerment, Govt of India.

Darpan (NITI Aayog, Government of India) ID : MN/2009/0000568

 [centrefor.communityinitiative](https://www.instagram.com/centrefor.communityinitiative)  Centre for Community Initiative  +91 6909859042

 CCI_Information  Centre for Community Initiative  info@communityinitiative.in



Centre for Community Initiative (CCI) is a non-governmental, non-political and not-for-profit organization started in 2002 by like-minded individuals dealing with various issues to provide a better society through community initiative and participation towards their welfare. CCI was restructured in 2007 when the Secretary, who is a father of a blind child, felt the urgent need to form a parents' group that would meet regularly to share their problems, to encourage one another in challenging times and to work towards creating a more accepting society.

With this, CCI was restructured and is devoted to Persons with Disabilities by advocating, facilitating and empowering parents, siblings and PwD through practical support. It involves mapping positive and supportive environment for Persons with Disabilities; encourage inclusive society and advocates for their rights and dignity.

With the vision of building a healthy and just society with equal opportunities for all, CCI has diversified its focus area and work towards the upliftment of the marginalised communities through different livelihood and sustainability programmes. It also shares, listens, commits and work towards building a responsive society in which the community can explore their potential and grow in self-esteem to enjoy full participation in the community.



THEMATIC AREA

1. Disability

- Centre Based
- Community Based
- Therapeutic Services
- Early Intervention
- Vocational Rehabilitation
- Inclusive Education Program

2. Advocacy & Community Empowerment

- Legal Aid Clinic
- Rights and Entitlement

3. Disaster

- Disability Inclusive Disaster Risk Reduction (DiDRR)

4. Livelihood/ Sustainable Development

- Land Based Farming
- LiveStock
- Skill Development
- Rejuvenating Springs
- Micro Finance
- Community Assets



DISABILITY

Malsawm Ability Resource Centre (MARC)

Overview

Malsawm Ability Resource Centre (MARC) is a budding resource centre located at Pearsonmun village, Churchandpur, Manipur that caters to the needs of persons with disabilities in the region through a variety of its components.



1. The Malsawm Initiative
(A School for Children with Special Needs)



2. Early Intervention Unit



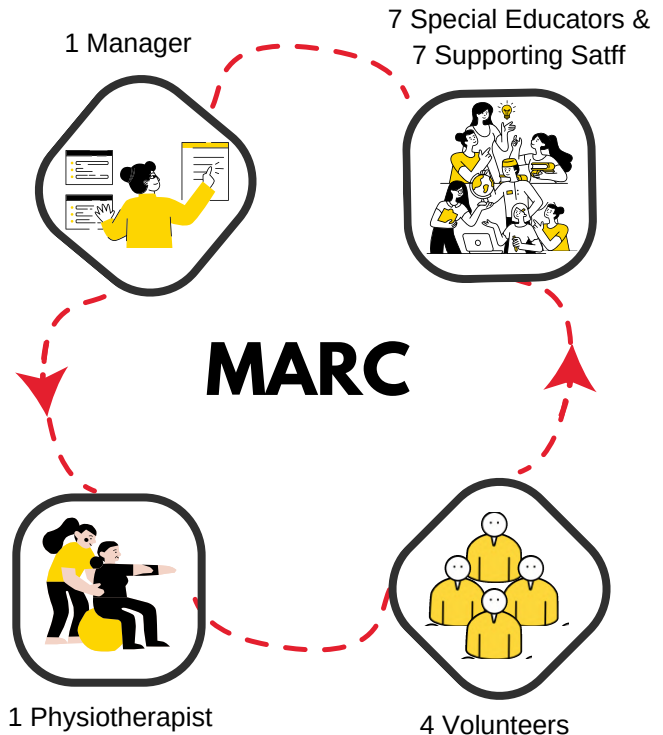
3. Therapy Services Unit



4. Home Based Education Unit

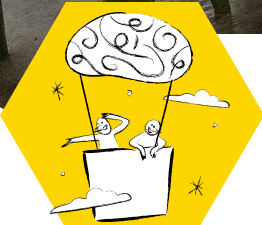


5. Inclusive Education Programme



MARC is look-after by one of the Manager, the centre has a team of dedicated professionals including 7 special educators and a physiotherapist and another 7 classroom supporting staffs with vast experience in their field providing services in the centre as well as in the community, and 4 volunteers on a regular basis.

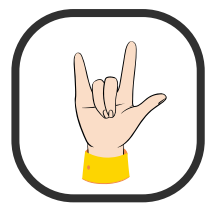
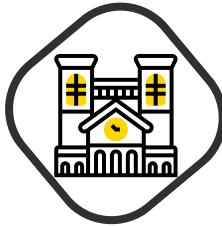
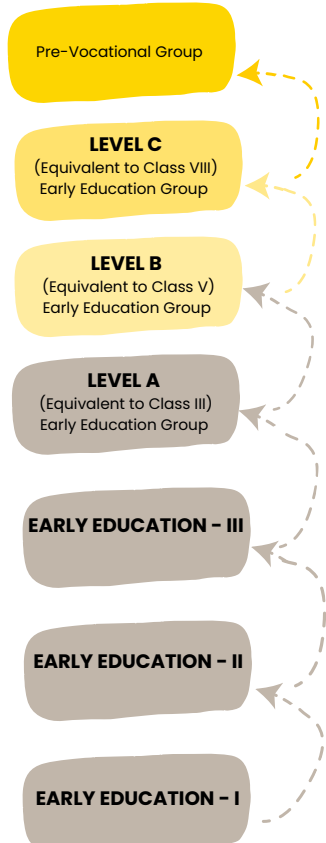
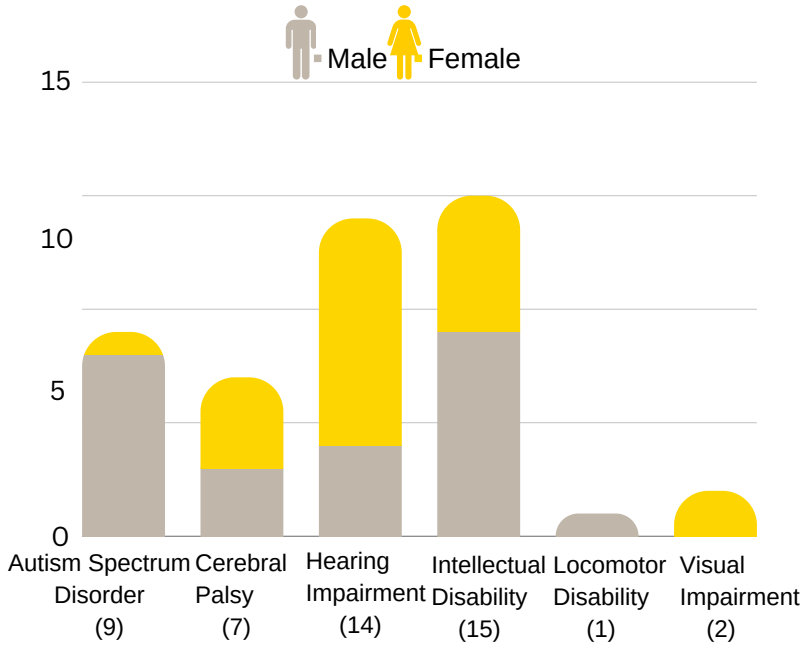




1. The Malsawm Initiative (TMI)

A School for Children with Special Needs

The Malsawm Initiative (A School for Children with Special Needs)/ TMI has been providing education to children with disabilities since 2011. A total of 48 students, 25 males and 23 females, age ranging from 6-17 years are enrolled in the school in different levels/groups.



Education is based on Individualized Education Plan (IEP) developed to suit specific needs of each child

TMI is an accredited agency & Students of Level A, B and C are also enrolled in Open Basic Education under NIOS

Students are also taught sign language and Braille according to their need.

The Malsawm Initiative



Chingbiakdik was born with a congenital cataract that has unfortunately shown no signs of improvement or remedy. Despite this challenge, Chingbiakdik is a bright and talented child who loves to sing and learn new songs at a rapid pace.

Initially, Chingbiakdik was quite timid and afraid to venture away from her mother or explore new things. She was also sensitive to the noise created by other students, which made it difficult for her to fully engage in classroom activities.

However, with time and patience, Chingbiakdik has made significant progress. She is now eager to learn and participate in activities, including tactile storybooks and other objects. As she has grown older, Chingbiakdik has become more independent from her mother and has even expressed her desire to be her own perso. She is now able to socialize with her classmates and express her needs and wants with confidence.

Dikdik also enjoys physical activities such as swinging, sliding, and playing in the sand pit. With the help of her mentors at school, she has learned to walk around the classroom and corridor using a railing technique. She has also become proficient in using a cane stick to navigate her surroundings.

Despite the challenges she faces, Chingbiakdik is a determined and resilient young girl who is making great strides in her personal and academic growth. Her progress is a testament to her hard work and the support of her teachers and loved ones.



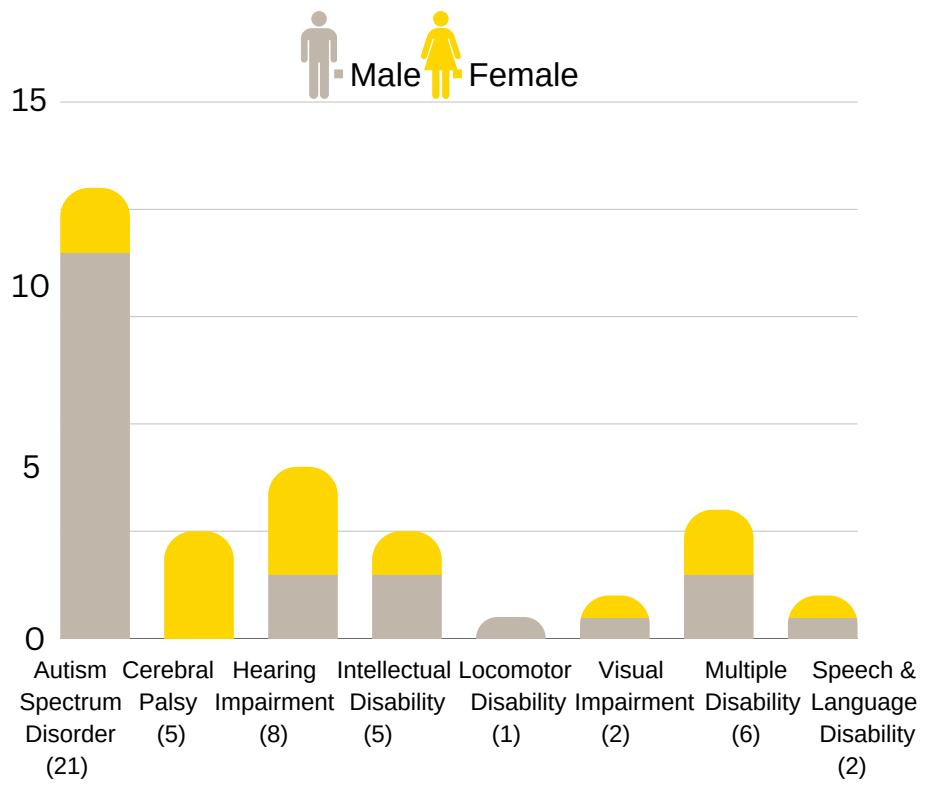


2. Early Intervention Unit (EIU)

Early Intervention Unit provides school readiness, behaviour management, life skills, physiotherapy and counselling to 50 children in the age group of 0-18 years with various types of disabilities at two centres located at MARC, Pearsonmun and Hmar Veng, Churachandpur.

Of the 50 children, 20 children in the age group of 0-10 years with Autism, Cerebral Palsy, Intellectual Disability and Multiple Disabilities furnishing required documents are covered by the National Trust under its Disha scheme (Early Intervention & School Readiness).

- Physiotherapy and counselling
- Life skills
- Behaviour management
- School Readiness



Early Intervention Unit



As a 7-year-old child with hearing impairment, Mangliansiam's life had been a silent world. Without audio perception and appropriate intervention, his natural development, especially speech and communication were negatively impacted. Unable to fully understand others and unable to communicate his needs and feelings, his frustration manifest to others as 'tantrums'.

Since joining Early Intervention Unit at MARC in September 2022, Mangliansiam and his family received counselling and training in basic sign language.

He has since been able to identify primary colours and match shapes, colours; identify and write A-Z independently; count numbers from 1 – 10, name every day things like cars, umbrella, ball, egg, etc, all in sign language.

His remarkably fast development in communication also led to a more holistic development. Now being able to understand others better and being able express his needs and feelings better, his confidence and self esteem has seen a healthy development. "He rarely throws 'tantrums' and is very excited to go to school (Early Intervention Unit)", said his mother.





3. Therapy Services Unit (TSU)

Physiotherapy is provided to 29 beneficiaries from The Malsawm Initiative, Early Intervention Unit and Home Based Care Unit by the physiotherapist regularly with the support of teachers/assistants who are trained in basic physiotherapy exercises. Training is also provided to parents/siblings so that they can sustain the intervention at home too.

sessions a week that focus on strengthening of the upper and lower limbs, gait training, coordination and stability. His training includes kneeling, half kneeling, walking in parallel bars, cycling, trampoline jump, standing in balance board, agility ladder exercise, mini squat, stretching and ROM of the upper and lower limb.

After extensive therapy, Liansiam has shown remarkable improvement. He is able to stand from sitting position without support, stand on a balancing board without support, jump in between the agility ladder without support and weakness of the upper and lower limb has improved a lot along with fine motor and gross motor skills.



Personal Experience:

Love forming longitudinal relationships with kid and watching them grow and gain skills over time; love providing families diagnostic clarity and letting them know about what treatments we have and how much we still have left to do. Positive changes the organization has brought is to provide opportunities for individual with motor challenges to achieve optimal physical, cognitive and social independence through the application and promotion of conductive education principles.

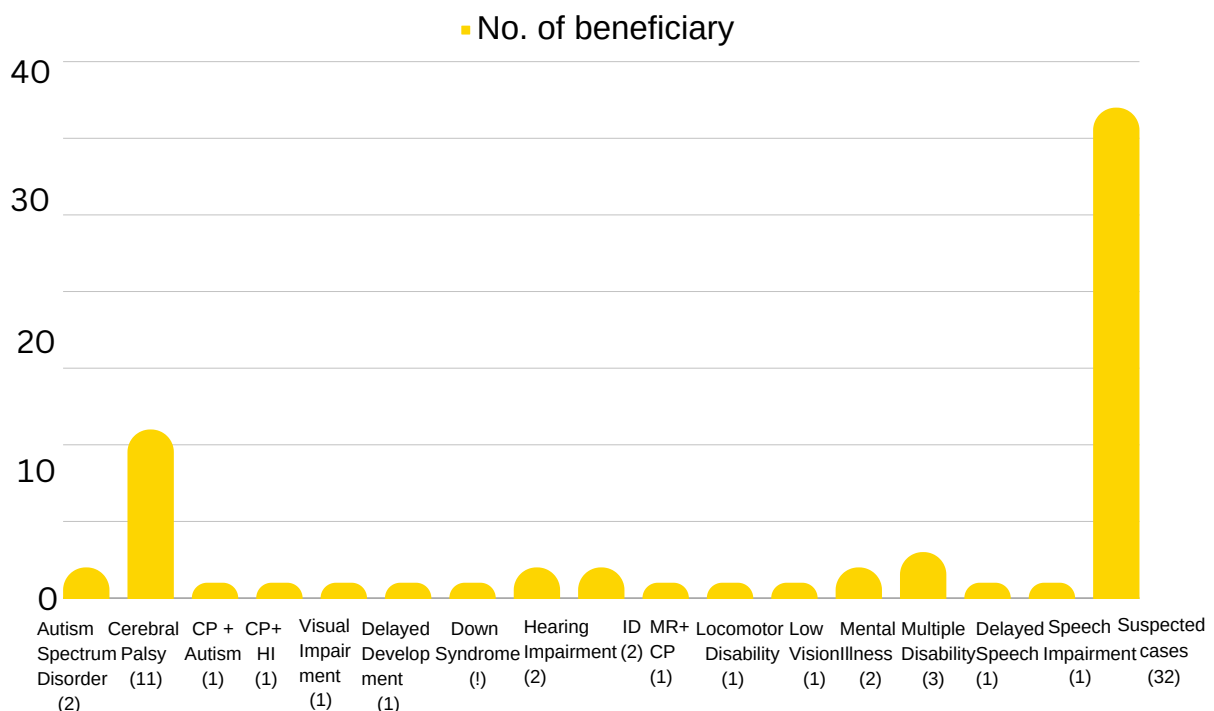
A 9-year boy who was diagnosed with cerebral palsy since birth, he had normal behavioural development but was having weakness in both upper and lower limbs. At Therapy Services Unit, MARC, he is provided physiotherapy three



4. Home Based Care (HBC)

Home School Programme supported by Wipro Foundation under Making Education Accessible for All (MEAL) is providing appropriate education on academic, motor skills, cognitive skills, sensory needs, sign language, physiotherapy, counselling, etc. to 64 children, 37 Males and with various types of disabilities spread across Lamka town in the age group of 0-18 years.

Children who are confined at home due to the nature of their disability or certain other challenges are provided services at home three times a week by Home Teacher with the support of 11 community volunteers. Of the 64 beneficiaries, 2, 4 and 5 beneficiaries joined mainstream school, TMI and EIU respectively.





Muanlal Tonsing, a 7-year-old child with Cerebral Palsy is one of the fortunate ones in that he is receiving necessary intervention at home, including physiotherapy, when many children like him unreached due to our limited capacity. On the other hand, it is very unfortunate and sad that his father is one of the many victims of Covid-19.

When parenting as it is, even in a two-parent home, is a monumental responsibility, Muanlal and his siblings are the sole responsibility of a single parent. Being a teacher herself, his mother has to juggle her responsibilities and fill in the role of a father as well.

Through the intervention provided by Home Based Care Unit, MARC since July 2022, Muanlal is now receiving his much-needed physiotherapy sessions at home. Until the intervention, he was unable and does not even want to try holding objects and things. He was scared and unable to climb stairs at all. Now, he is able to hold objects or things for a few minutes and climb stairs holding on to the railing for support.

His mother, fully acknowledging that not only his son, but their whole family is the beneficiary HBC, MARC said with a smile, “...to say the least, we need not worry about going for a physiotherapy session”.



Latitude: 24.328768
Longitude: 93.710253
Altitude: 765.9±1 m



Power of My Hand



Latitude: 24.333915
Longitude: 93.682639
Elevation: 866.77±1 m
Accuracy: 43.4 m
Azimuth: 151° (SE)
Pitch: -21.8° (9.9°)
Time: 25-01-2022 14:19
Note: Bhiplanthang

Photo: by An



Latitude: 24.365547
Longitude: 93.694354
Elevation: 832.61±2m
Accuracy: 20.0m
Azimuth: 55° (NE)
Pitch: -10.5° (-6.1°)
Time: 08-02-2023 15:35
Note: Biakson



Latitude: 24.365547
Longitude: 93.694354
Elevation: 832.61±2m





5. Inclusive Education Programme

2022-07

Inclusive School Programme supported by Wipro Foundation under Making Education Accessible for All (MEAL) is capacitating 6 mainstream co-ed schools (2 govt. & 4 private) on inclusive education. Based on formal MoUs and permissions, two teachers each from partner schools; Tuibuang Govt. H/S, Vimala Raina Govt. H/S, Little Gems Academy, VK Tawna High, The

Pathway School and Happy Heart School are capacitated by Inclusive Educators on learning differences in the classroom, creating inclusive classroom, setting up inclusive practices, sign language, Braille, developing teaching learning materials, etc. They were also taken on an exposure visit to Jyoti Sroat Inclusive School, Shillong and then provided hand-holding support towards inclusive education.



Inclusive Education Programme



We are thrilled to convey that VK Tawna High School has successfully implemented our highly recommended initiative to establish a fully operational Resource Room! This dedicated space has been meticulously designed to cater to children who require personalized one-on-one sessions, offering a wide range of services tailored to meet their unique educational and physical needs.

This will enhance the learning experience for our students. The Resource Room will enhance the learning experience for students and serve as a

haven for those who require extra support, providing them with the individual attention they deserve. Our team of dedicated professionals is ready to provide top-notch assistance, ensuring that each child receives the specialized attention they need to thrive academically and physically. From personalized tutoring sessions to tailored physical exercises, we have carefully curated a comprehensive range of services to address every student's specific requirement.

We firmly believe that this new Resource Room will revolutionize the way we support students, fostering an environment of inclusivity and empowerment. By offering personalized one-on-one sessions, we are empowering students to reach their full potential and achieve academic success.

We are truly excited about the positive impact this Resource Room will have on students' lives. It is a testament to our commitment to providing the best possible education and support for every child of our partner school. Together, we will continue to create an environment where every student can thrive and excel.





ADVOCACY & COMMUNITY EMPOWERMENT

Advocacy & Community Empowerment

Disabled People Organisation (DPO)

CCI encouraged self-advocacy by way of having a platform of DPO for the hill Districts of Manipur. After mobilising throughout the 9 hill District, Manipur Hill District Disabled Union (MHDDU) was formed to raise their own voice for their own rights and entitlements.



Unique Disability Identity (UDID) Card and Disability Certificate.

With the changing of the disability certification system by introducing Unique Disability Identity (UDID) by the Ministry of Social Justice & Empowerment, CCI has initiated and enrolled more than 1000 PwDs for UDID.

Awareness on the importance of UDID and Training on UDID Process was organised in different villages, covering 7 village of the hill district of Manipur. Ten Data operators of 3 Member of Legislative Assemblies of different Assembly Constituency are given training on how to enrol PwDs on the UDID online portal.



Legal Awareness on RPWD Act 2016 cum UDID Enrolment Camp of Persons with Disabilities (PwDs) was organised jointly over the year with Social Welfare, Churachandpur, District Medical Board, Churachandpur and District Legal Services Authority, Churachandpur.





Aids & Appliances

with support from National Institute for the Empowerment of Persons with Intellectual Disability (NIEPID), Secunderabad, 18 Teaching Learning Material kits is distributed to Persons with Intellectual Disabilities.



Niramaya Health Insurance Card

under The National Trust for the Welfare of Persons with Autism, Cerebral Palsy, Mental Retardation and Multiple Disabilities 39 beneficiaries have been enrolled and received Niramaya Health Card. Enrolment of UDID and Niramaya health Insurance Schemes is going on all year round at CCI Admin Office.

Observance

Since inception, CCI has observed different types of observance. Some of them are World Autism Awareness Day, International Day of Sign Language, International Day of Persons with Disability and so on. Reaching out at different schools, community level and parents of persons with disabilities. Activities and topics discussed during the programme were Rights of Persons with Disabilities Acts and Policies, right based approach, Group discussion, Simulation on different types of disability is performed by the participant. Where participants learn and came to aware of what disability is and their rights.



Advocacy & Community Empowerment



With the empowerment of Organisations of Persons with Disability (OPD), significant positive changes has been witnessed in the district and in the hills districts of Manipur.

To name a few; Churachandpur district, Chandel district and Tamenglong district has witnessed positive changes in the Unique Disability identity (UDID) enrolment and assessment.

Thangkhanmuan's Independence: Thangkhanmuan is a married man with paraplegia (locomotor disability). He struggled with his mobility and had difficulty performing everyday tasks independently. Through an aid program, Thangkhanmuan was provided with a motorised tricycle and a range of assistive devices. These aids significantly improved his quality of life, allowing him to move easily around their locality and feeding their pigs. Thangkhanmuan gained newfound independence and was able to actively participate in church programs and social activities.



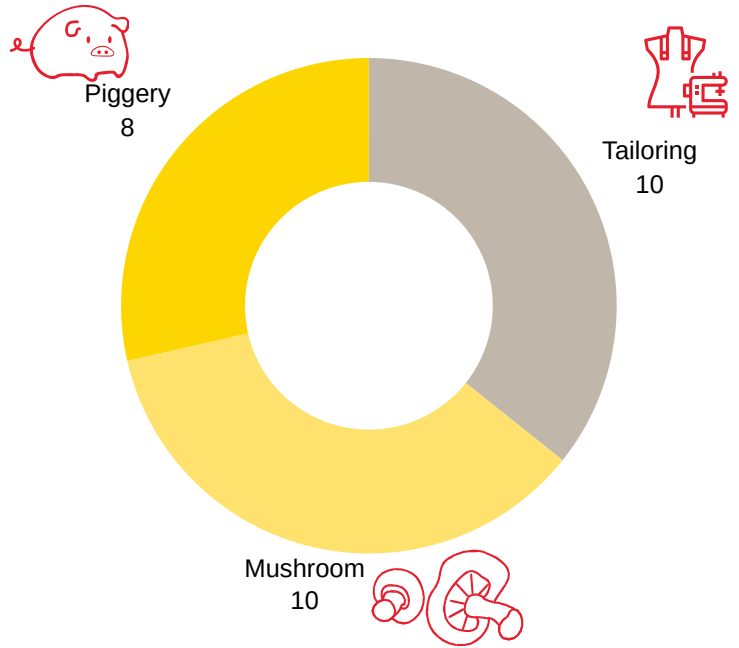


DISASTER

Disability Inclusive Disaster Risk Reduction

CCI's DiDRR have always been a primary focus and key thematic area, taking the first step to respond, react, and act for the community. In many ways, CCI's closely support the Disaster Management Authority.

Partnering with GiveIndia, CCI has taken a proactive approach to introduce self – employment through entrepreneurship for sustainable livelihoods generation to families affected by Covid-19. Through this initiative, 28 beneficiaries have been empowered with different livelihood skills such as tailoring, Mushroom Cultivation and piggery farming.



STORY OF CHANGE



Mushroom cultivation is an eco-friendly activity that utilises agricultural waste, which is abundantly available in every corner of the state. In turn, this cultivation process yields fruiting bodies with exceptional nutritional and medicinal attributes. For generations, mushrooms have been considered a delicious and preferred food item among the indigenous tribes in Manipur. Moreover, mushroom cultivation serves as a valuable source of income, particularly for women who are homemakers.

Mrs. Lhingneilam, who has been affected by the Covid-19 pandemic, is participating in our mushroom training program as one of the beneficiaries of the Empowering the Livelihood of Covid-19 Affected Families project, which is a part of the Give India initiative on May 2023. She resides in Tuibong, Churachandpur and is also a mother of a child with special needs.

The Covid-19 pandemic has had a severe impact on their source of income, making it increasingly difficult for them to meet their daily needs.

However, upon learning about our training program, Mrs. Lhingneilam eagerly enrolled and successfully completed a 30-day skill training program on Mushroom cultivation at RSETI, Pearsonmun. Equipped with the valuable knowledge gained from RSETI, Mrs. Lhingneilam took the initiative to establish her own mushroom production unit at her home. Initially, she started with small-scale cultivation of oyster mushrooms.

With the guidance and support provided by our training centre, Mrs. Lhingneilam has managed to significantly increase her mushroom production to an impressive range of 50-100 kg per month. As a result, she has successfully ventured into selling fresh mushrooms within her local community. Encouraged by her initial sales, she wisely reinvests her income to purchase more spawn and prepare the mushrooms to cater to the growing demands of her customers.

By consistently selling mushrooms on a monthly basis, Mrs. Lhingneilam has been able to generate a steady income. She is now planning to expand her business by adding value to her products, such as producing dried mushroom powder and other value-added items. With the support of the Give India project, Mrs. Lhingneilam has not only found a reliable source of income for her family but has also become a role model for other mothers of special needs children.







LIVELIHOOD/ SUSTAINABLE DEVELOPMENT

Sustainable Farming

To change an aged old jhuming cultivation to permanent and sustainable farming, CCI with support from NABARD under its Tribal Development Fund (TDF) started a project called Border Area Integrated Sustainable Farming in the border area of India and Myanmar under Singngat TD Block within Churachandpur District. The project duration is 5 years starting from July 2022 to July 2027 and covers 200 farmers from remote tribal villages.

The goal of the project is to stabilise the livelihood condition of the targeted families with a broad

objective is to improve the socio-economic life of tribal families through sustainable farming by adopting stable livelihood, reduction in distress and migration, improved quality of life, increased capacity and participation of women in the development process.

People's organizations like Village Planning Committees (VPCs), Farmer Producer Organization (FPOs) and Self Help Groups (SHGs) were also formed where they were given various training for capacity building and judicious conservation measures for effective plantation.





Rejuvenation of Springs

CCI has two ongoing Springshed based Watershed Development projects i.e., Kangkap Springshed based Watershed Development project and G.Bualjang & Tuilakjang Springshed based Watershed Development project. The project followed an integrated approach between water supply development, sanitation and catchment area protection to improve water resource sustainability. The components of the project includes Livelihood Interventions for Women Development & Landless Development (Horticulture plantation and animal husbandry), formation of SHGs federation where they were given training on food processing, book keeping and accountancy. Capacity building and other trainings were also conducted on need based.

Kangkap Springshed Development Project is in the final stage. The ecologically sound and scientific solution implemented by CCI is seen as a highly

replicable strategy to tackle the pervasive and persistent problem of water scarcity in mountainous regions like Kangkap. Springshed development programs which were initiated in the village focuses on rehabilitating and conserving springs, as well as promoting efficient water use practices. As a result, springs have rejuvenated, and the water table has risen which enhances drinking and domestic purposes. The gap between demand and supply of water decreases. People are also using surplus water to cultivate small vegetable patches but irrigation for farming large land is not enough. The maximum benefit has been to the women and girls who have to walk the distance and carry the water home, as well as to children who now have more time with their mothers. They have more time for their education, family and other chores. There is an overall increase in the quality of life due to the increased use of water in households. This project is seen particularly beneficial in areas with limited access to water resources.

STORY OF CHANGE

Simlui is one of the springs that is included under Springshed Development project. All year round, the spring of Simlui dried up and women flock come together to draw water from this spring and wait for their turns. It is a consuming task and people don't have time for other chores. Simlui is located in the middle of the middle of the village and is the main source of water for the villagers. After intervention under the Springshed Development Project, the collection chamber of Simlui is full almost year

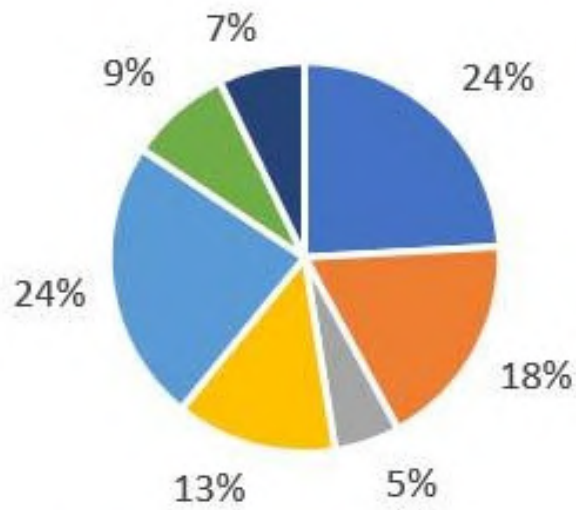
round. They can draw water at any of their convenient times now. G. Bualjang and Tuilakjang Springshed Development Project is in the 2nd phase. With the guidance of professionals, the villagers implemented sustainable water management practices and through the construction of contour trenches, check dams, afforestation and other water conservation measures.

After the implementation of springshed development, villages have observed a significant increase in water availability. Springs that were previously dry or had low water yield have been rejuvenated for drinking, utilization and agricultural purposes, leading to improved livelihoods and food security in the village. Not only the recharge the of springs increased but the quality of the spring also improved. Another notable impact of the programme is the improvement in sanitation, which was earlier seriously compromised due to water scarcity. This has had a positive impact on their health and well-being, as they no longer have to travel long distances to fetch water for consumption and other purposes.



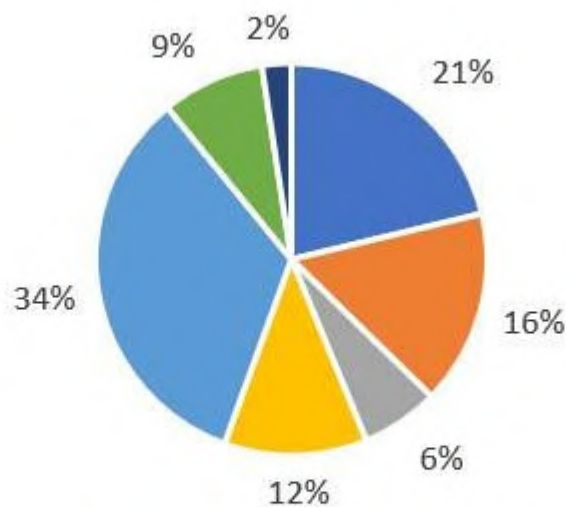
FINANCE REPORT

INCOME



- General Administration
- Early Intervention
- Livelihood
- Excess of expenditure over income
- The Malsawm Initiative
- Inclusive Education
- Disaster
- Total : INR 22004797

EXPENDITURE



- General Administration
- Inclusive education
- Advocacy
- The Malsawm Initiative
- Livelihood
- Total : INR 2,20,04,797.00
- Early Intervention
- Disaster



Latitude: 24.36946
Longitude: 93.699911
Elevation: 843.4±16 m
Accuracy: 5.4 m
Azimuth: 283° (W)
Pitch: 2.1°
Time: 08-18-2022 15:02
Note: seivumkam

01

Vision

To provide a healthy and just society with equal opportunities for all

02

Mission

To build and strengthen society for health care, education and socio-economic development through community initiatives and participation.

03

Belief

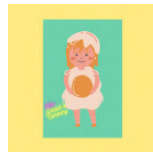
We believe that each individual, communities, institutions and government contribute in their own way to making the world a better place to live in.

04

Theory of Change

CCI envisions a just society where all humans have equal opportunity irrespective of their physical abilities/disabilities. We believe that every individual, communities, and institutions have their respective share in building equal opportunity for every human. CCI facilitates the creation of equal opportunity by informing, inspiring people to act and by taking direct actions.

PARTNERS : PAST AND PRESENT





Centre for Community Initiative

www.communityinitiative.in